

# BIOCHEMAZONE PRODUCT CATALOG

---

# 2021

[www.biochemazone.com](http://www.biochemazone.com)



## About **BIOCHEMAZONE™**

---

### **A Pioneer in Biochemical Reagents and Instrumentation**

Biochemazone™ is an evolving biotech company providing high quality and purified artificial Biological chemicals, reagents, and solutions such as simulated saliva, simulated urine, simulated perspiration, etc. and developing various application-oriented products required by Academic research units, Universities, Hospitals, Industries, government, & private laboratories.



# BIOCHEMAZONE<sup>©</sup>

Our Biochemical reagents are thoroughly tested to meet the research and development demand for excellent quality, uncompromising biological, which accurately mimics the real Biological solutions activity at competitive prices.

Biochemazone™ has established a sterling reputation among the scientific community, a reputation built on innovative products, customer service, and attention to detail.

Our reputation for quality is an essential factor in achieving a favorable position in the market place and the benefits associated with manufacturing top-quality synthetic biological products such as Artificial Saliva, Artificial Urine, Artificial Sebum, Artificial Eccrine Perspiration, Artificial Sweat, Artificial Serum, Artificial Blood, Artificial Semen, and Artificial Cerumen and more...



+13658887013



[www.biochemazone.com](http://www.biochemazone.com)



[info@biochemazone.com](mailto:info@biochemazone.com)

# INDEX

S.No.	Product Name	Product ID	Page No
1.	Artificial Eccrine Perspiration	(BZ110)	09
2.	Artificial Eccrine Perspiration	(BZ112)	09
3.	Artificial Eccrine Perspiration	(BZ113)	10
4.	Artificial Eccrine Perspiration	(BZ111)	10
5.	Artificial Eccrine Perspiration	(BZ114)	11
6.	Artificial Eccrine Perspiration	(BZ115)	11
7.	Artificial Eccrine Perspiration	(BZ160)	12
8.	Artificial Eccrine Perspiration	(BZ157)	12
9.	Artificial Eccrine Sweat Sebum Emulsion	(BZ118)	13
10.	Artificial Eccrine Sweat Sebum Emulsion	(BZ130)	13
11.	Artificial Perspiration - Custom pH	(BZ142)	15
12.	Artificial Perspiration - Not Stabilized	(BZ141)	15
13.	Artificial Perspiration DN 53160-2	(BZ125)	16
14.	Artificial Perspiration	(BZ138)	16
15.	Artificial Perspiration	(BZ139)	17
16.	Artificial Perspiration	(BZ135)	17
17.	Artificial Perspiration	(BZ140)	18
18.	Artificial Perspiration	(BZ136)	18
19.	Artificial Perspiration	(BZ137)	19
20.	Artificial Perspiration	(BZ148)	19
21.	Artificial Perspiration	(BZ156)	21
22.	Artificial Perspiration	(BZ129)	21
23.	Artificial Perspiration	(BZ128)	22
24.	Artificial Perspiration	(BZ151)	22
25.	Artificial Perspiration	(BZ154)	23
26.	Artificial Perspiration	(BZ155)	23
27.	Artificial Perspiration	(BZ152)	24
28.	Artificial Perspiration	(BZ153)	24
29.	Artificial Perspiration	(BZ158)	25
30.	Artificial Perspiration	(BZ145)	25
31.	Artificial Perspiration	(BZ146)	27
32.	Artificial Perspiration	(BZ143)	27
33.	Artificial Perspiration	(BZ144)	28
34.	Artificial Perspiration	(BZ159)	28
35.	Artificial Perspiration	(BZ149)	29
36.	Artificial Perspiration	(BZ150)	29
37.	Artificial Perspiration	(BZ147)	30
38.	Artificial Perspiration	(BZ123)	30
39.	Artificial Perspiration	(BZ127)	31
40.	Artificial Perspiration	(BZ124)	31
41.	Artificial Perspiration	(BZ121)	33
42.	Artificial Perspiration	(BZ120)	33
43.	Artificial Perspiration	(BZ122)	34
44.	Artificial Perspiration	(BZ116)	34
45.	Artificial Perspiration	(BZ117)	35
46.	Artificial Perspiration	(BZ133)	35
47.	Artificial Perspiration	(BZ134)	36

# INDEX

S.No.	Product Name	Product ID	Page No
48.	Artificial Perspiration	(BZ131)	36
49.	Artificial Perspiration	(BZ132)	37
50.	Artificial Perspiration	(BZ119)	37
51.	Artificial Saliva	(BZ106)	40
52.	Artificial Saliva	(BZ109)	40
53.	Artificial Saliva	(BZ108)	41
54.	Artificial Saliva	(BZ184)	41
55.	Artificial Saliva	(BZ107)	42
56.	Artificial Saliva	(BZ105)	42
57.	Artificial Urine	(BZ101)	44
58.	Artificial Urine	(BZ103)	44
59.	Artificial Urine	(BZ104)	45
60.	Artificial Urine	(BZ186)	45
61.	Artificial Urine	(BZ102)	46
62.	Artificial Urine	(BZ102S)	46
63.	Artificial Urine	(BZ188)	47
64.	Artificial Amniotic Fluid	(BZ259)	49
65.	Artificial Aqueous Humour Fluid	(BZ276)	49
66.	Artificial Bone Marrow Fluid	(BZ268)	50
67.	Artificial Brain Fluid	(BZ256)	50
68.	Artificial Breast Milk	(BZ255)	51
69.	Artificial Bronchoalveolar Lavage Fluid	(BZ305)	51
70.	Artificial Canine Saliva	(BZ297)	52
71.	Artificial Cerebrospinal Solution	(BZ178)	52
72.	Artificial Cerumen	(BZ171)	53
73.	Artificial Cerumen	(BZ172)	53
74.	Artificial Cholesterol Fluid	(BZ265)	55
75.	Artificial colonic fluid	(BZ177)	55
76.	Artificial Colostrum Fluid	(BZ306)	56
77.	Artificial Dandruff	(BZ293)	56
78.	Artificial Endosomal Fluid	(BZ260)	57
79.	Artificial Feline Saliva	(BZ301)	57
80.	Artificial Gastric Fluid	(BZ175)	58
81.	Artificial intestinal fluid	(BZ176)	58
82.	Artificial Luminal Fluid	(BZ283)	59
83.	Artificial Lymph Fluid	(BZ267)	59
84.	Artificial Lysosomal Fluid	(BZ257)	61
85.	Artificial Menses Fluid	(BZ266)	61
86.	Artificial Mucus Matrix	(BZ275)	62
87.	Artificial Nasal Fluid	(BZ251)	62
88.	Artificial Nasal Mucus Fluid	(BZ253)	63
89.	Artificial Nasopharyngeal Fluid	(BZ252)	63
90.	Artificial Otitis Media Fluid	(BZ304)	64
91.	Artificial Peripheral Lymph Fluid	(BZ303)	64
92.	Artificial Phlegm	(BZ296)	65
93.	Artificial Plasma Fluid	(BZ273)	65
94.	Artificial Pleural Fluid	(BZ258)	67

# INDEX

S.No.	Product Name	Product ID	Page No
95.	Artificial Renal Tubular Fluid	(BZ269)	67
96.	Artificial Rhinorrhea	(BZ295)	68
97.	Artificial Serum Ultrafiltrate	(BZ307)	68
98.	Artificial Sputum Matrix	(BZ274)	69
99.	Artificial Vomitus Fluid	(BZ282)	69
100.	Artificial Wound Fluid Exudate	(BZ292)	70
101.	Gamble's Solution Lung Fluid	(BZ284)	70
102.	Hank's Balanced Salt Solution	(BZ261)	71
103.	Simulated Body Fluid	(BZ174)	71
104.	Phagolysosomal Simulant Fluid	(BZ262)	73
105.	Phagolysosomal Simulant Fluid	(BZ173)	73
106.	Artificial Baby Hands Sweat	(BZ298)	74
107.	Simulated Bile Juice	(BZ263)	74
108.	Simulated Blood Matrix	(BZ281)	75
109.	Simulated Blood Serum	(BZ278)	75
110.	Simulated Cochlear Fluid	(BZ286)	76
111.	Simulated Duodenal Fluid	(BZ299)	76
112.	Simulated Endolymph Fluid	(BZ287)	77
113.	Simulated Extracellular Fluid	(BZ280)	77
114.	Simulated Hepatic Fluid	(BZ264)	78
115.	Simulated Inflammatory Fluid	(BZ302)	78
116.	Simulated Interstitial Fluid	(BZ254)	79
117.	Simulated Interstitial Lung Fluid	(BZ300)	79
118.	Simulated Intrapleural Fluid	(BZ290)	80
119.	Simulated Lung Fluid	(BZ179)	80
120.	Simulated Pancreatic Juice	(BZ271)	81
121.	Simulated Pericardial Fluid	(BZ288)	81
122.	Simulated Perilymph Fluid	(BZ285)	82
123.	Simulated Peritoneal Fluid	(BZ289)	82
124.	Simulated Prostate Fluid	(BZ272)	83
125.	Simulated Renal Fluid	(BZ270)	83
126.	Simulated Semen Fluid	(BZ180)	84
127.	Simulated Serous Fluid	(BZ291)	84
128.	Simulated synovial fluid	(BZ183)	85
129.	Simulated Tears	(BZ182)	85
130.	Simulated Transcellular Fluid	(BZ279)	86
131.	Simulated Vaginal Fluid	(BZ181)	86
132.	Simulated Vitreous Humor	(BZ277)	87
133.	Synthetic Fecal Stool	(BZ308)	87
134.	Synthetic Vernix Caseosa	(BZ294)	88
135.	L MES Buffer	(BZ229)	90
136.	1×PBS Buffer	(BZ205)	90
137.	Tris EDTA (TE) Buffer	(BZ210)	91
138.	10×PBS Buffer	(BZ220)	91
139.	10×TBST Buffer	(BZ226)	92
140.	Acetic Acid-Sodium Acetate Buffer	(BZ225)	92
141.	Borate Buffered Saline	(BZ224)	93

# INDEX

S.No.	Product Name	Product ID	Page No
142.	CGS Buffer	(BZ233)	93
143.	Citric acid sodium citrate buffer	(BZ203)	94
144.	Dulbecco's Phosphate Buffered Saline	(BZ221)	94
145.	Earle's Balanced Salts Solutions	(BZ232)	96
146.	HEPES Buffer	(BZ228)	96
147.	Krebs-Ringer Bicarbonate HEPES Buffer	(BZ222)	97
148.	Modified Tyrode's solution	(BZ235)	97
149.	Phosphate Buffered Saline Powder	(BZ207)	98
150.	PBST (1x,pH7.4)	(BZ218)	98
151.	PBST (10x,pH7.4)	(BZ219)	99
152.	Phosphate Buffer	(BZ204)	99
153.	Ringer's Solution	(BZ211)	100
154.	Saline Sodium Citrate Buffer	(BZ231)	100
155.	Sodium citrate buffer powder	(BZ213)	102
156.	TBS Buffer	(BZ223)	102
157.	Tris Acetic Acid	(BZ208)	103
158.	Tris boric acid buffer	(BZ202)	103
159.	Tris Boric Acid	(BZ209)	104
160.	Tris-EDTA Buffer	(BZ230)	104
161.	Tris-HCl buffer	(BZ201)	105
162.	Tris-HCl buffer	(BZ234)	105
163.	TRIS-HCL BUFFER	(BZ206)	106
164.	Tris-HCl buffer	(BZ217)	106
165.	Tris-HCl buffer	(BZ214)	107
166.	Tris-HCl buffer	(BZ215)	107
167.	Tris-HCl buffer	(BZ216)	108
168.	Tyrode's Solution	(BZ212)	108



**CHEMAZONE**

True Research Partner in Science

# ARTIFICIAL PERSPIRATION

---



The Artificial Eccrine Perspiration is the closest mimic to true human eccrine sweat. It consists of nineteen amino acids, the seven most abundant minerals, and the four most abundant metabolites.



**Artificial Eccrine Perspiration**  
Not Stabilized (BZ110)

Artificial Eccrine Perspiration has a pH of 4.5 (we customize the pH on request without any additional cost, our artificial Eccrine Perspiration consists of amino acids, minerals, and various metabolites which simulates the composition, properties, and pH of the real Human eccrine sweat at Low price. We add preservatives, stabilizers, antifungal, and antibacterial reagents to enhance the shelf life. Please request it while making the order

**Artificial Eccrine Perspiration Features & Note:**

- ✔ Simulated Eccrine Perspiration is a sterile solution and can be used directly.
- ✔ Simulated Eccrine Perspiration, store at 4 degrees, transported at room temperature.
- ✔ This Eccrine Perspiration is limited to the scientific research of professionals, and cannot be used for clinical diagnosis or treatment, and cannot be used for food or medicine, and cannot be stored in ordinary houses.
- ✔ For your safety and health, please wear a lab coat and disposable gloves.

**100 mL : \$95.00**

**200 mL: \$135.00**

**500 mL: \$275.00**

**1000 mL: \$550.00**



**Artificial Eccrine Perspiration**  
Stabilized (BZ112)

Artificial Eccrine Perspiration has a pH of 4.5 (we customize the pH on request without any additional cost, our artificial Eccrine Perspiration consists of amino acids, minerals, and various metabolites which simulates the composition, properties, and pH of the real Human eccrine sweat at Low price. We add preservatives, stabilizers, antifungal, and antibacterial reagents to enhance the shelf life. Please request it while making the order

**Artificial Eccrine Perspiration Features & Note:**

- ✔ Simulated Eccrine Perspiration is a sterile solution and can be used directly.
- ✔ Simulated Eccrine Perspiration, store at 4 degrees, transported at room temperature.
- ✔ This Eccrine Perspiration is limited to the scientific research of professionals, and cannot be used for clinical diagnosis or treatment, and cannot be used for food or medicine, and cannot be stored in ordinary houses.
- ✔ For your safety and health, please wear a lab coat and disposable gloves.

**100 mL : \$95.00**

**200 mL: \$135.00**

**500 mL: \$275.00**

**1000 mL: \$550.00**





**Artificial Eccrine Perspiration**  
Stabilized (BZ113)

Artificial Eccrine Perspiration has a pH of 4.5 (we customize the pH on request without any additional cost, our artificial Eccrine Perspiration consists of amino acids, minerals, and various metabolites which simulates the composition, properties, and pH of the real Human eccrine sweat at Low price. We add preservatives, stabilizers, antifungal, and antibacterial reagents to enhance the shelf life. Please request it while making the order

**Artificial Eccrine Perspiration Features & Note:**

- ✔ Simulated Eccrine Perspiration is a sterile solution and can be used directly.
- ✔ Simulated Eccrine Perspiration, store at 4 degrees, transported at room temperature.
- ✔ This Eccrine Perspiration is limited to the scientific research of professionals, and cannot be used for clinical diagnosis or treatment, and cannot be used for food or medicine, and cannot be stored in ordinary houses.
- ✔ For your safety and health, please wear a lab coat and disposable gloves.

**100 mL : \$95.00**

**200 mL: \$135.00**

**500 mL: \$275.00**

**1000 mL: \$550.00**



**Artificial Eccrine Perspiration**  
Stabilized (BZ111)

Artificial Eccrine Perspiration has a pH of 4.5 (we customize the pH on request without any additional cost, our artificial Eccrine Perspiration consists of amino acids, minerals, and various metabolites which simulates the composition, properties, and pH of the real Human eccrine sweat at Low price. We add preservatives, stabilizers, antifungal, and antibacterial reagents to enhance the shelf life. Please request it while making the order

**Artificial Eccrine Perspiration Features & Note:**

- ✔ Simulated Eccrine Perspiration is a sterile solution and can be used directly.
- ✔ Simulated Eccrine Perspiration, store at 4 degrees, transported at room temperature.
- ✔ This Eccrine Perspiration is limited to the scientific research of professionals, and cannot be used for clinical diagnosis or treatment, and cannot be used for food or medicine, and cannot be stored in ordinary houses.
- ✔ For your safety and health, please wear a lab coat and disposable gloves.

**100 mL : \$95.00**

**200 mL: \$135.00**

**500 mL: \$275.00**

**1000 mL: \$550.00**





**Artificial Eccrine Perspiration**  
Not Stabilized (BZ114)

Artificial Eccrine Perspiration has a pH of 6.8 (we customize the pH on request without any additional cost, our artificial Eccrine Perspiration consists of amino acids, minerals, and various metabolites which simulates the composition, properties, and pH of the real Human eccrine sweat at Low price. We add preservatives, stabilizers, antifungal, and antibacterial reagents to enhance the shelf life. Please request it while making the order

**Artificial Eccrine Perspiration Features & Note:**

- ✔ Simulated Eccrine Perspiration is a sterile solution and can be used directly.
- ✔ Simulated Eccrine Perspiration, store at 4 degrees, transported at room temperature.
- ✔ This Eccrine Perspiration is limited to the scientific research of professionals, and cannot be used for clinical diagnosis or treatment, and cannot be used for food or medicine, and cannot be stored in ordinary houses.
- ✔ For your safety and health, please wear a lab coat and disposable gloves.

**100 mL : \$95.00**

**200 mL: \$135.00**

**500 mL: \$275.00**

**1000 mL: \$550.00**



**Artificial Eccrine Perspiration**  
Stabilized (BZ115)

Artificial Eccrine Perspiration has a pH of 4.5 (we customize the pH on request without any additional cost, our artificial Eccrine Perspiration consists of amino acids, minerals, and various metabolites which simulates the composition, properties, and pH of the real Human eccrine sweat at Low price. We add preservatives, stabilizers, antifungal, and antibacterial reagents to enhance the shelf life. Please request it while making the order

**Artificial Eccrine Perspiration Features & Note:**

- ✔ Simulated Eccrine Perspiration is a sterile solution and can be used directly.
- ✔ Simulated Eccrine Perspiration, store at 4 degrees, transported at room temperature.
- ✔ This Eccrine Perspiration is limited to the scientific research of professionals, and cannot be used for clinical diagnosis or treatment, and cannot be used for food or medicine, and cannot be stored in ordinary houses.
- ✔ For your safety and health, please wear a lab coat and disposable gloves.

**100 mL : \$95.00**

**200 mL: \$135.00**

**500 mL: \$275.00**

**1000 mL: \$550.00**





**Artificial Eccrine Perspiration**  
NON-STABILIZED (BZ160)

Artificial Eccrine Perspiration has a pH of 6.8 (we customize the pH on request without any additional cost, our artificial Eccrine Perspiration consists of amino acids, minerals, and various metabolites which simulates the composition, properties, and pH of the real Human eccrine sweat at Low price. We add preservatives, stabilizers, antifungal, and antibacterial reagents to enhance the shelf life. Please request it while making the order

**ARTIFICIAL ECCRINE PERSPIRATION Features & Notes:**

- ✔ Simulated eccrine sweat or Perspiration is a sterile solution and can be used directly. It is used for the study of the Chemical resistance ofautomotivetrim materials and components.
- ✔ Simulated Eccrine Perspiration, stored at 4 degrees, transported at room temperature.
- ✔ This Eccrine Perspiration is limited to the scientific research of professionals, and cannot be used for clinical diagnosis or treatment, and cannot be used for food or medicine, and cannot be stored in ordinary houses.
- ✔ For your safety and health, please wear a lab coat and disposable gloves.

**100 mL : \$95.00**

**200 mL: \$135.00**

**500 mL: \$275.00**

**1000 mL: \$550.00**



**Artificial Eccrine Perspiration**  
STABILIZED (BZ157)

Artificial Eccrine Perspiration has a pH of 4.5 (we customize the pH on request without any additional cost, our artificial Eccrine Perspiration consists of amino acids, minerals, and various metabolites which simulates the composition, properties, and pH of the real Human eccrine sweat at Low price. We add preservatives, stabilizers, antifungal, and antibacterial reagents to enhance the shelf life. Please request it while making the order

**Artificial Perspiration Features & Note:**

- ✔ Simulated Perspiration is a sterile solution and can be used directly. It is used for the study of COLORFASTNESS OF CLOTHES & TEXTILES TO PERSPIRATION.
- ✔ Simulated Perspiration, store at 4 degrees, transported at roomtemperature.
- ✔ This Perspiration is limited to the scientific research of professionals, and cannot be used for clinical diagnosis or treatment, and cannot be used for food or medicine, and cannot be stored in ordinary houses.
- ✔ For your safety and health, please wear a lab coat and disposable gloves.

**100 mL : \$95.00**

**200 mL: \$135.00**

**500 mL: \$275.00**

**1000 mL: \$550.00**





**ARTIFICIAL ECCRINE SWEAT-SEBUM EMULSION (BZ118)**

Artificial Perspiration Sebum has a pH of 6.8 (we customize the pH on request without any additional cost, our artificial Eccrine Perspiration consists of amino acids, minerals, and various metabolites such as Oleic acid as an emulsifying agent which simulates the composition, properties, and pH of the real Human eccrine sweat at Low price. We add preservatives, stabilizers, antifungal, and antibacterial reagents to enhance the shelf life. Please request it while making the order.

**Artificial Eccrine Sebum Features & Note:**

- ✔ Simulated Perspiration Sebum is a sterile solution and can be used directly.
- ✔ Simulated Perspiration Sebum, store at 4 degrees, transported at room temperature.
- ✔ This Perspiration Sebum emulsion is limited to the scientific research of professionals, and cannot be used for clinical diagnosis or treatment, and cannot be used for food or medicine, and cannot be stored in ordinary houses.
- ✔ For your safety and health, please wear a lab coat and disposable gloves.

**100 mL : \$275.00**

**200 mL: \$525.00**

**500 mL: \$925.00**

**1000 mL: \$1,750.00**



**Artificial Eccrine Sweat Sebum Emulsion (BZ130)**

Artificial Perspiration Sebum has a pH of 6.8 (we customize the pH on request without any additional cost, our artificial Eccrine Perspiration consists of amino acids, minerals, and various metabolites such as Oleic acid as an emulsifying agent which simulates the composition, properties, and pH of the real Human eccrine sweat at Low price. We add preservatives, stabilizers, antifungal, and antibacterial reagents to enhance the shelf life. Please request it while making the order.

**Artificial Perspiration Features & Note:**

- ✔ Simulated Perspiration Sebum is a sterile solution and can be used directly.
- ✔ Simulated Perspiration Sebum, store at 4 degrees, transported at room temperature.
- ✔ This Perspiration Sebum emulsion is limited to the scientific research of professionals, and cannot be used for clinical diagnosis or treatment, and cannot be used for food or medicine, and cannot be stored in ordinary houses.
- ✔ For your safety and health, please wear a lab coat and disposable gloves.

**100 mL : \$275.00**

**200 mL: \$525.00**

**500 mL: \$925.00**

**1000 mL: \$1,750.00**



# Artificial • Eccrine Perspiration



**Bi**   
CHEMAZONE



Validity: 6 months

# Artificial • Eccrine Perspiration



STABILIZED 200ML  
(BZ111)

**Bi**   
CHEMAZONE



pH Range: 2 to 9  
Pack Size: 100 mL, 200 mL,  
500 mL, 1000 mL



**ARTIFICIAL PERSPIRATION - CUSTOM PH, NOT STABILIZED ANSI-BHMA A156.18 (BZ142)**

Artificial Perspiration has a pH of 4.3 (we customize the pH on request without any additional cost, our artificial Eccrine Perspiration consists of amino acids, minerals, and various metabolites which simulates the composition, properties, and pH of the real Human eccrine sweat at Low price. We add preservatives, stabilizers, antifungal, and antibacterial reagents to enhance the shelf life. Please request it while making the order.

**Artificial Perspiration Features & Note**

- ✔ Simulated Perspiration is a sterile solution and can be used directly.
- ✔ Simulated Perspiration, store at 4 degrees, transported at room temperature.
- ✔ This Perspiration is limited to the scientific research of professionals, and cannot be used for clinical diagnosis or treatment, and cannot be used for food or medicine, and cannot be stored in ordinary houses.
- ✔ For your safety and health, please wear a lab coat and disposable gloves.

**100 mL : \$95.00**

**200 mL: \$135.00**

**500 mL: \$275.00**

**1000 mL: \$550.00**



BIOCHEMAZONE  
In Science



**ARTIFICIAL PERSPIRATION - NOT STABILIZED, ANSI-BHMA-A156.18 (BZ141)**

This artificial perspiration eccrine formulation is used to test finishes on various base materials as per the builder's hardware association. This Simulated Sweat formulation is not offered in a stabilized format. Artificial Perspiration has a pH of 4.3 (we customize the pH on request without any additional cost, our artificial Eccrine Perspiration consists of amino acids, minerals, and various metabolites which simulates the composition, properties, and pH of the real Human eccrine sweat at Low price. We add preservatives, stabilizers,

**Artificial Perspiration Features & Note**

- ✔ Simulated Perspiration Sebum is a sterile solution and can be used directly.
- ✔ Simulated Perspiration, store at 4 degrees, transported at room temperature.
- ✔ This Perspiration is limited to the scientific research of professionals, and cannot be used for clinical diagnosis or treatment, and cannot be used for food or medicine, and cannot be stored in ordinary houses.
- ✔ For your safety and health, please wear a lab coat and disposable gloves.

**100 mL : \$95.00**

**200 mL: \$135.00**

**500 mL: \$275.00**

**1000 mL: \$550.00**





**ARTIFICIAL PERSPIRATION DN  
53160-2/BS EN 1811 (BZ125)**

Artificial Perspiration has a pH of 4.7 (we customize the pH on request without any additional cost, our artificial Eccrine Perspiration consists of amino acids, minerals, and various metabolites which simulates the composition, properties, and pH of the real Human eccrine sweat at Low price. We add preservatives, stabilizers, antifungal, and antibacterial reagents to enhance the shelf life. Please request it while making the order. This pH 4.7 formulation is used to determine corrosion (tarnishing, oxidation, and surface penetration) resistance

**Artificial Perspiration Features & Note:**

- ✔ Simulated Perspiration is a sterile solution and can be used directly.
- ✔ Simulated Perspiration, store at 4 degrees, transported at room temperature.
- ✔ This Perspiration is limited to the scientific research of professionals, and cannot be used for clinical diagnosis or treatment, and cannot be used for food or medicine, and cannot be stored in ordinary houses.
- ✔ For your safety and health, please wear a lab coat and disposable gloves.

**100 mL : \$95.00**

**200 mL: \$135.00**

**500 mL: \$275.00**

**1000 mL: \$550.00**



**ARTIFICIALPERSPIRATION, NOT STABILIZED  
(BZ138)**

Artificial Perspiration has a pH of 4.3 (we customize the pH on request without any additional cost, our artificial Eccrine Perspiration consists of amino acids, minerals, and various metabolites which simulates the composition, properties, and pH of the real Human eccrine sweat at Low price. We add preservatives, stabilizers, antifungal, and antibacterial reagents to enhance the shelf life. Please request it while making the order. This pH 4.3 formulation is used to determine the colorfastness of articles in the textile and Dye Industries. This pH

**Artificial Perspiration Features & Note**

- ✔ Simulated Perspiration is a sterile solution and can be used directly. Artificial Sweat for COLORFASTNESS OF Fabrics, Threads, Cloths.
- ✔ Simulated Perspiration, store at 4 degrees, transported at room temperature.
- ✔ This Perspiration is limited to the scientific research of professionals, and cannot be used for clinical diagnosis or treatment, and cannot be used for food or medicine, and cannot be stored in ordinary houses.
- ✔ For your safety and health, please wear a lab coat and disposable gloves.

**100 mL : \$95.00**

**200 mL: \$135.00**

**500 mL: \$275.00**

**1000 mL: \$550.00**





**ARTIFICIAL PERSPIRATION STABILIZED (BZ139)**

Artificial Perspiration has a pH of 4.3 (we customize the pH on request without any additional cost, our artificial Eccrine Perspiration consists of amino acids, minerals, and various metabolites which simulates the composition, properties, and pH of the real Human eccrine sweat at Low price. We add preservatives, stabilizers, antifungal, and antibacterial reagents to enhance the shelf life. Please request it while making the order. This pH 4.3 formulation is used to determine the colorfastness of articles in the textile and Dye Industries. This pH 4.3 solution

**Artificial Perspiration Features & Note**

- ✔ Simulated Perspiration is a sterile solution and can be used directly. Artificial Sweat for COLORFASTNESS OF Fabrics, Threads, Cloths.
- ✔ Simulated Perspiration, store at 4 degrees, transported at room temperature.
- ✔ This Perspiration is limited to the scientific research of professionals, and cannot be used for clinical diagnosis or treatment, and cannot be used for food or medicine, and cannot be stored in ordinary houses.
- ✔ For your safety and health, please wear a lab coat and disposable gloves.

**100 mL : \$95.00**

**200 mL: \$135.00**

**500 mL: \$275.00**

**1000 mL: \$550.00**



**ARTIFICIAL PERSPIRATION NOT STABILIZED (BZ135)**

Artificial Perspiration has a pH of 4.3 (we customize the pH on request without any additional cost, our artificial Eccrine Perspiration consists of amino acids, minerals, and various metabolites which simulates the composition, properties, and pH of the real Human eccrine sweat at Low price. We add preservatives, stabilizers, antifungal, and antibacterial reagents to enhance the shelf life. Please request it while making the order. This pH 4.3 formulation is used to determine the colorfastness of articles in the textile and Dye Industries. This pH

**Artificial Perspiration Features & Note**

- ✔ Simulated Perspiration is a sterile solution and can be used directly. Artificial Sweat for COLORFASTNESS OF Fabrics, Threads, Cloths.
- ✔ Simulated Perspiration, store at 4 degrees, transported at room temperature.
- ✔ This Perspiration is limited to the scientific research of professionals, and cannot be used for clinical diagnosis or treatment, and cannot be used for food or medicine, and cannot be stored in ordinary houses.
- ✔ For your safety and health, please wear a lab coat and disposable gloves.

**100 mL : \$95.00**

**200 mL: \$135.00**

**500 mL: \$275.00**

**1000 mL: \$550.00**





**Artificial Eccrine Perspiration**  
STABILIZED (BZ140)

Artificial Perspiration has a pH of 4.3 (we customize the pH on request without any additional cost, our artificial Eccrine Perspiration consists of amino acids, minerals, and various metabolites which simulates the composition, properties, and pH of the real Human eccrine sweat at Low price. We add preservatives, stabilizers, antifungal, and antibacterial reagents to enhance the shelf life. Please request it while making the order. This pH 4.3 formulation is used to determine the colorfastness of articles in the textile and Dye Industries. Thy4.3

**Artificial Perspiration Features & Note**

- ✔ Simulated Perspiration is a sterile solution and can be used directly. Artificial Sweat for COLORFASTNESS OF Fabrics, Threads, Cloths.
- ✔ Simulated Perspiration, store at 4 degrees, transported at room temperature.
- ✔ This Perspiration is limited to the scientific research of professionals, and cannot be used for clinical diagnosis or treatment, and cannot be used for food or medicine, and cannot be stored in ordinary houses.
- ✔ For your safety and health, please wear a lab coat and disposable gloves.

100 mL : \$95.00

200 mL: \$135.00

500 mL: \$275.00

1000 mL: \$550.00



**Artificial Eccrine Perspiration**  
STABILIZED (BZ136)

Artificial Perspiration has a pH of 4.3 (we customize the pH on request without any additional cost, our artificial Eccrine Perspiration consists of amino acids, minerals, and various metabolites which simulates the composition, properties, and pH of the real Human eccrine sweat at Low price. We add preservatives, stabilizers, antifungal, and antibacterial reagents to enhance the shelf life. Please request it while making the order. This pH 4.3 formulation is used to determine the colorfastness of articles in the textile and Dye Industries. This pH

**Artificial Perspiration Features & Note**

- ✔ Simulated Perspiration is a sterile solution and can be used directly. Artificial Sweat for COLORFASTNESS OF Fabrics, Threads, Cloths.
- ✔ Simulated Perspiration, store at 4 degrees, transported at room temperature.
- ✔ This Perspiration is limited to the scientific research of professionals, and cannot be used for clinical diagnosis or treatment, and cannot be used for food or medicine, and cannot be stored in ordinary houses.
- ✔ For your safety and health, please wear a lab coat and disposable gloves.

100 mL : \$95.00

200 mL: \$135.00

500 mL: \$275.00

1000 mL: \$550.00





## Artificial Eccrine Perspiration STABILIZED (BZ137)

Artificial Perspiration has a pH of 4.3 (we customize the pH on request without any additional cost, our artificial Eccrine Perspiration consists of amino acids, minerals, and various metabolites which simulates the composition, properties, and pH of the real Human eccrine sweat at Low price. We add preservatives, stabilizers, antifungal, and antibacterial reagents to enhance the shelf life. Please request it while making the order. This pH 4.3 formulation is used to determine the colorfastness of articles in the textile and Dye Industries. This pH 4.3 solution is used to determine the colorfastness

### Artificial Perspiration Features & Note

- ✓ Simulated Perspiration is a sterile solution and can be used directly. Artificial Sweat for COLORFASTNESS OF Fabrics, Threads, Cloths.
- ✓ Simulated Perspiration, store at 4 degrees, transported at room temperature.
- ✓ This Perspiration is limited to the scientific research of professionals, and cannot be used for clinical diagnosis or treatment, and cannot be used for food or medicine, and cannot be stored in ordinary houses.
- ✓ For your safety and health, please wear a lab coat and disposable gloves.

100 mL : \$95.00

200 mL: \$135.00

500 mL: \$275.00

1000 mL: \$550.00



## Artificial Eccrine Perspiration STABILIZED (BZ148)

Artificial Perspiration has a pH of 4.3 (we customize the pH on request without any additional cost, our artificial Eccrine Perspiration consists of amino acids, minerals, and various metabolites which simulates the composition, properties, and pH of the real Human eccrine sweat at Low price. We add preservatives, stabilizers, antifungal, and antibacterial reagents to enhance the shelf life. Please request it while making the order. This pH 4.3 formulation is used to determine the colorfastness of articles in the textile and Dye Industries. This pH

### Artificial Perspiration Features & Note

- ✓ Simulated Perspiration is a sterile solution and can be used directly. Artificial Sweat for COLORFASTNESS OF Fabrics, Threads, Cloths.
- ✓ Simulated Perspiration, store at 4 degrees, transported at room temperature.
- ✓ This Perspiration is limited to the scientific research of professionals, and cannot be used for clinical diagnosis or treatment, and cannot be used for food or medicine, and cannot be stored in ordinary houses.
- ✓ For your safety and health, please wear a lab coat and disposable gloves.

100 mL : \$95.00

200 mL: \$135.00

500 mL: \$275.00

1000 mL: \$550.00





# Artificial Eccrine Perspiration

ACIDIC, STABILIZED  
(BZ157)

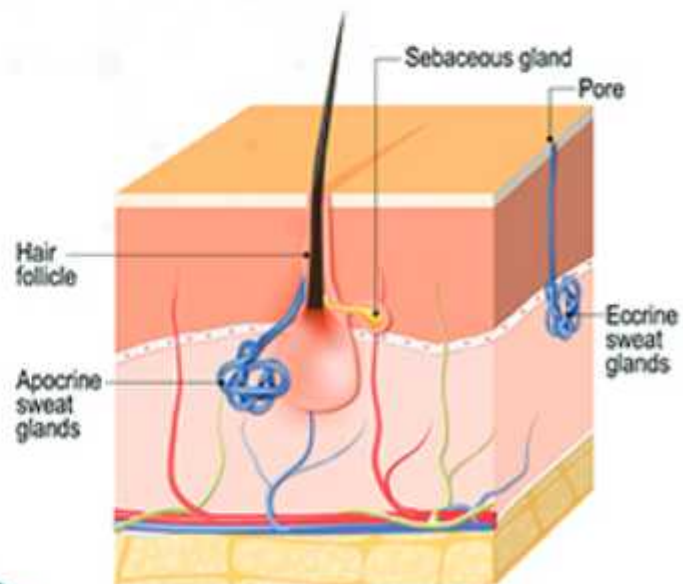


# Artificial Perspiration

AATCC TEST  
METHOD 15 SWEAT



## Sweat and sebaceous glands





**Artificial PERSPIRATION**  
ALKALINE, CUSTOM PH. 200 ML (BZ156)

Artificial Perspiration has a pH of 2.00 to 9.00 (we customize the pH on request without any additional cost, our artificial Eccrine Perspiration consists of amino acids, minerals, and various metabolites which simulates the composition, properties, and pH of the real Human eccrine sweat at Low price. We add preservatives, stabilizers, antifungal, and antibacterial reagents to enhance the shelf life. Please request it while making the order.

**Artificial Perspiration Features & Note:**

- ✔ Simulated Perspiration is a sterile solution and can be used directly. It is used for the study of COLORFASTNESS OF CLOTHES & TEXTILES TO PERSPIRATION.
- ✔ Simulated Perspiration, store at 4 degrees, transported at room temperature.
- ✔ This Perspiration is limited to the scientific research of professionals, and cannot be used for clinical diagnosis or treatment, and cannot be used for food or medicine, and cannot be stored in ordinary houses.
- ✔ For your safety and health, please wear a lab coat and disposable gloves.

**100 mL : \$95.00**

**200 mL: \$135.00**

**500 mL: \$275.00**

**1000 mL: \$550.00**



**Artificial Eccrine Perspiration**  
STABILIZED. (BZ129)

Artificial Perspiration has a pH of 2.00 to 9.00 (we customize the pH on request without any additional cost, our artificial Eccrine Perspiration consists of amino acids, minerals, and various metabolites which simulates the composition, properties, and pH of the real Human eccrine sweat at Low price. We add preservatives, stabilizers, antifungal, and antibacterial reagents to enhance the shelf life. Please request it while making the order.

**Artificial Perspiration Features & Note:**

- ✔ Simulated Perspiration is a sterile solution and can be used directly.
- ✔ Simulated Perspiration, store at 4 degrees, transported at room temperature.
- ✔ This Perspiration is limited to the scientific research of professionals, and cannot be used for clinical diagnosis or treatment, and cannot be used for food or medicine, and cannot be stored in ordinary houses.
- ✔ For your safety and health, please wear a lab coat and disposable gloves.

**100 mL : \$95.00**

**200 mL: \$135.00**

**500 mL: \$275.00**

**1000 mL: \$550.00**





**Artificial PERSPIRATION**  
ALKALINE, NON-STABILIZED (BZ128)

Artificial Perspiration has a pH of 9.0 (we customize the pH on request without any additional cost, our artificial Eccrine Perspiration consists of amino acids, minerals, and various metabolites which simulates the composition, properties, and pH of the real Human eccrine sweat at Low price. We add preservatives, stabilizers, antifungal, and antibacterial reagents to enhance the shelf life. Please request it while making the order.

**Artificial Perspiration Features & Note:**

- ✔ Simulated Perspiration is a sterile solution and can be used directly.
- ✔ Simulated Perspiration, store at 4 degrees, transported at room temperature.
- ✔ This Perspiration is limited to the scientific research of professionals, and cannot be used for clinical diagnosis or treatment, and cannot be used for food or medicine, and cannot be stored in ordinary houses.
- ✔ For your safety and health, please wear a lab coat and disposable gloves.

100 mL : \$95.00

200 mL: \$135.00

500 mL: \$275.00

1000 mL: \$550.00



**Artificial Eccrine Perspiration**  
NOT STABILIZED (BZ151)

Artificial Perspiration has a pH of 2.00 to 9.00 (we customize the pH on request without any additional cost, our artificial Eccrine Perspiration consists of amino acids, minerals, and various metabolites which simulates the composition, properties, and pH of the real Human eccrine sweat at Low price. We add preservatives, stabilizers, antifungal, and antibacterial reagents to enhance the shelf life. Please request it while making the order.

**Artificial Perspiration Features & Note:**

- ✔ Simulated Perspiration is a sterile solution and can be used directly. It is used for the study of COLORFASTNESS OF CLOTHES & TEXTILES TO PERSPIRATION.
- ✔ Simulated Perspiration, store at 4 degrees, transported at room temperature.
- ✔ This Perspiration is limited to the scientific research of professionals, and cannot be used for clinical diagnosis or treatment, and cannot be used for food or medicine, and cannot be stored in ordinary houses.
- ✔ For your safety and health, please wear a lab coat and disposable gloves.

100 mL : \$95.00

200 mL: \$135.00

500 mL: \$275.00

1000 mL: \$550.00





**Artificial PERSPIRATION**  
STABILIZED (BZ154)

Artificial Perspiration has a pH of 2.00 to 9.00 (we customize the pH on request without any additional cost, our artificial Eccrine Perspiration consists of amino acids, minerals, and various metabolites which simulates the composition, properties, and pH of the real Human eccrine sweat at Low price. We add preservatives, stabilizers, antifungal, and antibacterial reagents to enhance the shelf life. Please request it while making the order.

**Artificial Perspiration Features & Note:**

- ✔ Simulated Perspiration is a sterile solution and can be used directly. It is used for the study of COLORFASTNESS OF CLOTHES & TEXTILES TO PERSPIRATION.
- ✔ Simulated Perspiration, store at 4 degrees, transported at room temperature.
- ✔ This Perspiration is limited to the scientific research of professionals, and cannot be used for clinical diagnosis or treatment, and cannot be used for food or medicine, and cannot be stored in ordinary houses.
- ✔ For your safety and health, please wear a lab coat and disposable gloves.

**100 mL : \$95.00**

**200 mL: \$135.00**

**500 mL: \$275.00**

**1000 mL: \$550.00**



**Artificial Perspiration**  
(BZ155)

Artificial Perspiration has a pH of 2.00 to 9.00 (we customize the pH on request without any additional cost, our artificial Eccrine Perspiration consists of amino acids, minerals, and various metabolites which simulates the composition, properties, and pH of the real Human eccrine sweat at Low price. We add preservatives, stabilizers, antifungal, and antibacterial reagents to enhance the shelf life. Please request it while making the order.

**Artificial Perspiration Features & Note:**

- ✔ Simulated Perspiration is a sterile solution and can be used directly. It is used for the study of COLORFASTNESS OF CLOTHES & TEXTILES TO PERSPIRATION.
- ✔ Simulated Perspiration, store at 4 degrees, transported at room temperature.
- ✔ This Perspiration is limited to the scientific research of professionals, and cannot be used for clinical diagnosis or treatment, and cannot be used for food or medicine, and cannot be stored in ordinary houses.
- ✔ For your safety and health, please wear a lab coat and disposable gloves.

**100 mL : \$95.00**

**200 mL: \$135.00**

**500 mL: \$275.00**

**1000 mL: \$550.00**





## Artificial PERSPIRATION NOT STABILIZED (BZ152)

Artificial Perspiration has a pH of 2.00 to 9.00 (we customize the pH on request without any additional cost, our artificial Eccrine Perspiration consists of amino acids, minerals, and various metabolites which simulates the composition, properties, and pH of the real Human eccrine sweat at Low price. We add preservatives, stabilizers, antifungal, and antibacterial reagents to enhance the shelf life. Please request it while making the order.

### Artificial Perspiration Features & Note:

- ✔ Simulated Perspiration is a sterile solution and can be used directly. It is used for the study of COLORFASTNESS OF CLOTHES & TEXTILES TO PERSPIRATION.
- ✔ Simulated Perspiration, store at 4 degrees, transported at room temperature.
- ✔ This Perspiration is limited to the scientific research of professionals, and cannot be used for clinical diagnosis or treatment, and cannot be used for food or medicine, and cannot be stored in ordinary houses.
- ✔ For your safety and health, please wear a lab coat and disposable gloves.

100 mL : \$95.00

200 mL: \$135.00

500 mL: \$275.00

1000 mL: \$550.00



## Artificial Perspiration STABILIZED (BZ153)

Artificial Perspiration has a pH of 2.00 to 9.00 (we customize the pH on request without any additional cost, our artificial Eccrine Perspiration consists of amino acids, minerals, and various metabolites which simulates the composition, properties, and pH of the real Human eccrine sweat at Low price. We add preservatives, stabilizers, antifungal, and antibacterial reagents to enhance the shelf life. Please request it while making the order.

### Artificial Perspiration Features & Note:

- ✔ Simulated Perspiration is a sterile solution and can be used directly. It is used for the study of COLORFASTNESS OF CLOTHES & TEXTILES TO PERSPIRATION.
- ✔ Simulated Perspiration, store at 4 degrees, transported at room temperature.
- ✔ This Perspiration is limited to the scientific research of professionals, and cannot be used for clinical diagnosis or treatment, and cannot be used for food or medicine, and cannot be stored in ordinary houses.
- ✔ For your safety and health, please wear a lab coat and disposable gloves.

100 mL : \$95.00

200 mL: \$135.00

500 mL: \$275.00

1000 mL: \$550.00





**Artificial Perspiration**  
STABILIZED (BZ158)

Artificial Perspiration has a pH of 2.00 to 9.00 (we customize the pH on request without any additional cost, our artificial Eccrine Perspiration consists of amino acids, minerals, and various metabolites which simulates the composition, properties, and pH of the real Human eccrine sweat at Low price. We add preservatives, stabilizers, antifungal, and antibacterial reagents to enhance the shelf life. Please request it while making the order.

**Artificial Perspiration Features & Note:**

- ✔ Simulated Perspiration is a sterile solution and can be used directly. It is used for the study of COLORFASTNESS OF CLOTHES & TEXTILES To PERSPIRATION.
- ✔ Simulated Perspiration, store at 4 degrees, transported at room temperature.
- ✔ This Perspiration is limited to the scientific research of professionals, and cannot be used for clinical diagnosis or treatment, and cannot be used for food or medicine, and cannot be stored in ordinary houses.
- ✔ For your safety and health, please wear a lab coat and disposable gloves.

100 mL : \$95.00

200 mL: \$135.00

500 mL: \$275.00

1000 mL: \$550.00



**Artificial Perspiration**  
NOT STABILIZED (BZ145)

Artificial Perspiration has a pH of 8.00 (we customize the pH on request without any additional cost, our artificial Eccrine Perspiration consists of amino acids, minerals, and various metabolites which simulates the composition, properties, and pH of the real Human eccrine sweat at Low price. We add preservatives, stabilizers, antifungal, and antibacterial reagents to enhance the shelf life. Please request it while making the order.

**Artificial Perspiration Features & Note**

- ✔ Simulated Perspiration is a sterile solution and can be used directly. Artificial Perspiration Eccrine formulation is used to determine the colorfastness to perspiration of all-kinds of leather at all stages of processing.
- ✔ Simulated Perspiration, store at 4 degrees, transported at room temperature.
- ✔ This Perspiration is limited to the scientific research of professionals, and cannot be used for clinical diagnosis or treatment, and cannot be used for food or medicine, and cannot be stored in ordinary houses.
- ✔ For your safety and health, please wear a lab coat and disposable gloves.

100 mL : \$95.00

200 mL: \$135.00

500 mL: \$275.00

1000 mL: \$550.00





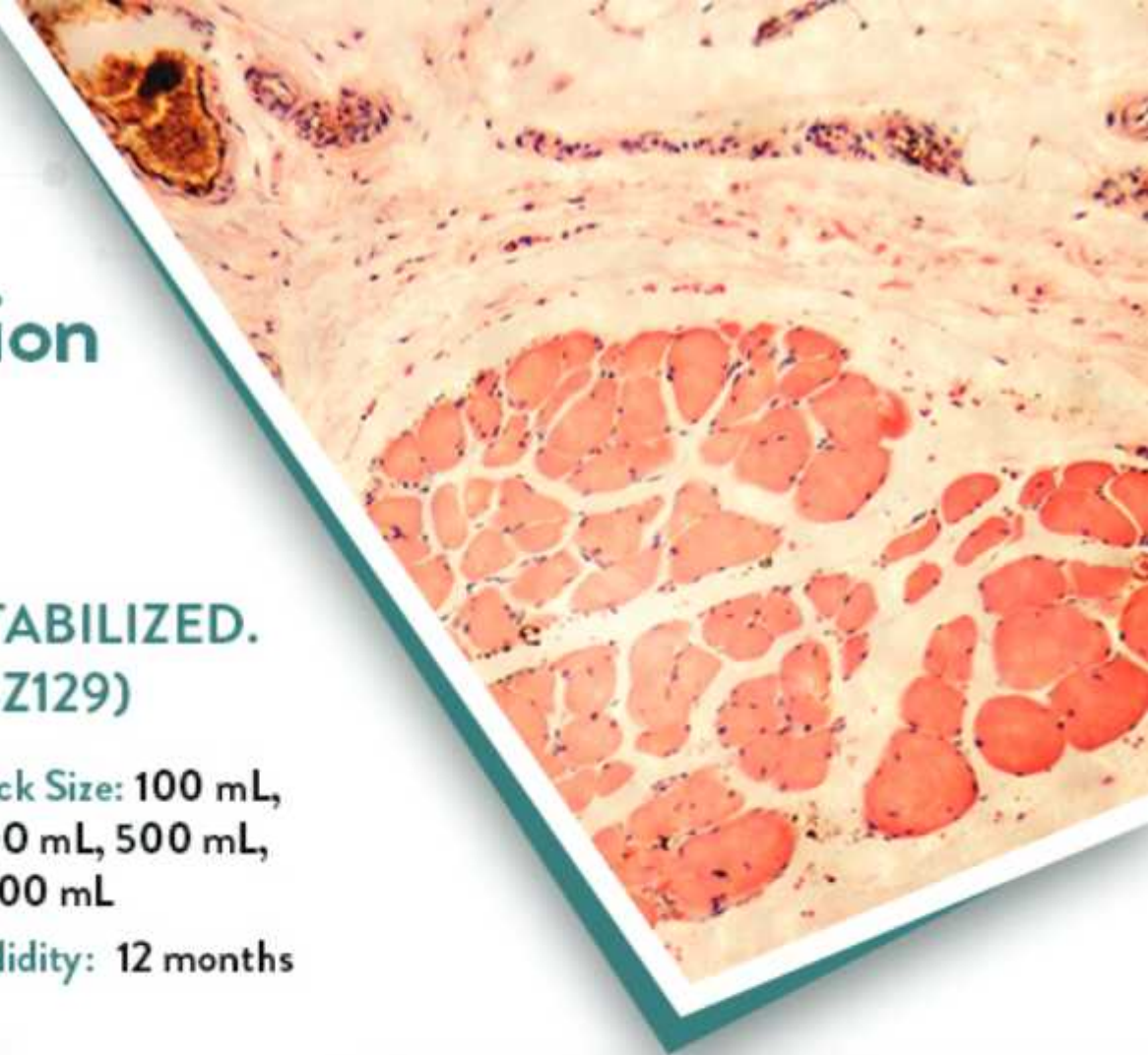
## Artificial Perspiration



**STABILIZED.  
(BZ129)**

**Pack Size: 100 mL,  
200 mL, 500 mL,  
1000 mL**

**Validity: 12 months**



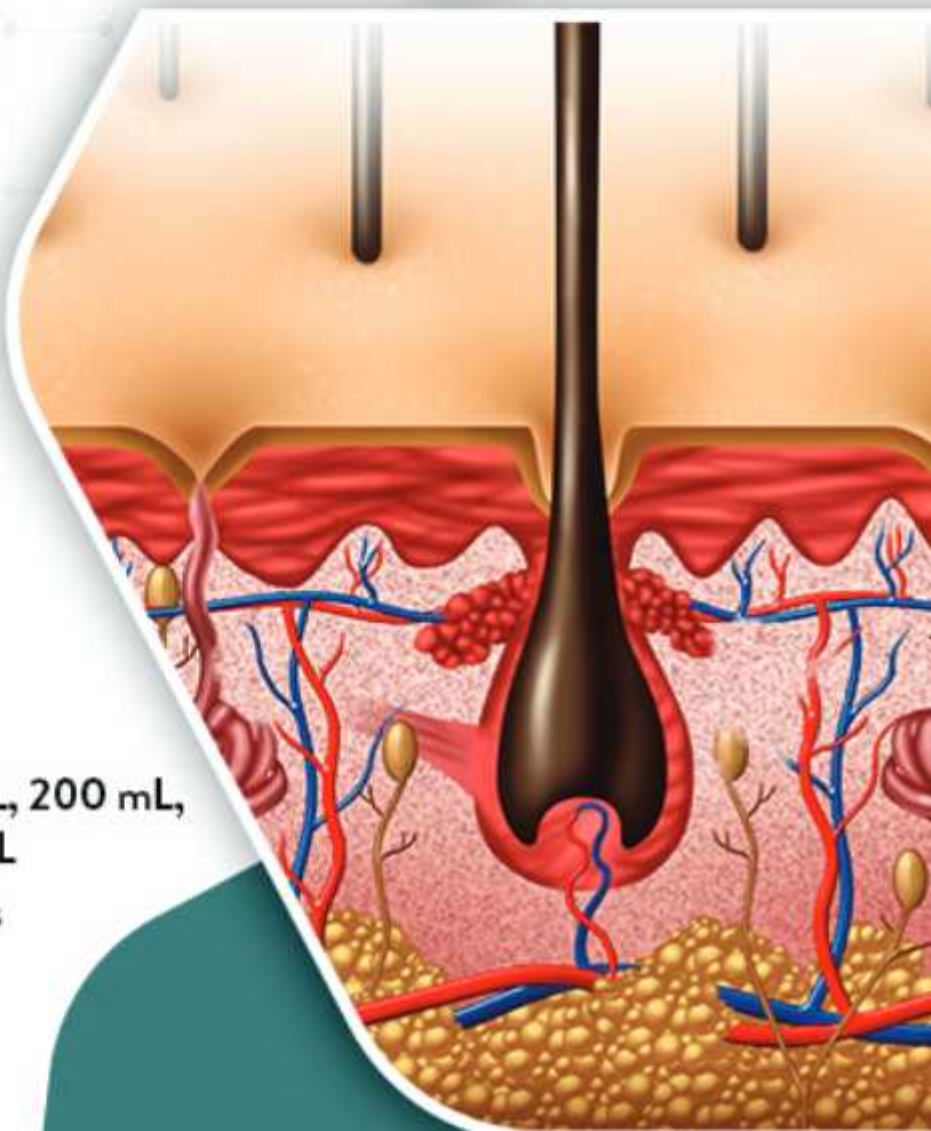
## Artificial Eccrine Perspiration



**STABILIZED.  
(BZ146)**

**Pack Size: 100 mL, 200 mL,  
500 mL, 1000 mL**

**Validity: 12 months**





**Artificial PERSPIRATION**  
STABILIZED, 200ML (BZ146)

Artificial Perspiration has a pH of 8.00 (we customize the pH on request without any additional cost, our artificial Eccrine Perspiration consists of amino acids, minerals, and various metabolites which simulates the composition, properties, and pH of the real Human eccrine sweat at Low price. We add preservatives, stabilizers, antifungal, and antibacterial reagents to enhance the shelf life. Please request it while making the order.

**Artificial Perspiration Features & Note**

- ✔ Simulated Perspiration is a sterile solution and can be used directly. Artificial Perspiration Eccrine formulation is used to determine the colorfastness to perspiration of all kinds of leather at all stages of processing.
- ✔ Simulated Perspiration, store at 4 degrees, transported at room temperature.
- ✔ This Perspiration is limited to the scientific research of professionals, and cannot be used for clinical diagnosis or treatment, and cannot be used for food or medicine, and cannot be stored in ordinary houses.
- ✔ For your safety and health, please wear a lab coat and disposable gloves.

**100 mL : \$95.00**

**200 mL: \$135.00**

**500 mL: \$275.00**

**1000 mL: \$550.00**



**Artificial Perspiration**  
NOT STABILIZED, 200ML (BZ143)

Artificial Perspiration has a pH of 8.00 (we customize the pH on request without any additional cost, our artificial Eccrine Perspiration consists of amino acids, minerals, and various metabolites which simulates the composition, properties, and pH of the real Human eccrine sweat at Low price. We add preservatives, stabilizers, antifungal, and antibacterial reagents to enhance the shelf life. Please request it while making the order.

**Artificial Perspiration Features & Note**

- ✔ Simulated Perspiration is a sterile solution and can be used directly. Artificial Perspiration Eccrine formulation is used to determine the colorfastness to perspiration of all kinds of leather at all stages of processing.
- ✔ Simulated Perspiration, store at 4 degrees, transported at room temperature.
- ✔ This Perspiration is limited to the scientific research of professionals, and cannot be used for clinical diagnosis or treatment, and cannot be used for food or medicine, and cannot be stored in ordinary houses.
- ✔ For your safety and health, please wear a lab coat and disposable gloves.

**100 mL : \$95.00**

**200 mL: \$135.00**

**500 mL: \$275.00**

**1000 mL: \$550.00**





## Artificial PERSPIRATION STABILIZED (BZ144)

Artificial Perspiration has a pH of 8.00 (we customize the pH on request without any additional cost, our artificial Eccrine Perspiration consists of amino acids, minerals, and various metabolites which simulates the composition, properties, and pH of the real Human eccrine sweat at Low price. We add preservatives, stabilizers, antifungal, and antibacterial reagents to enhance the shelf life. Please request it while making the order.

### Artificial Perspiration Features & Note

- ✔ Simulated Perspiration is a sterile solution and can be used directly. Artificial Perspiration Eccrine formulation is used to determine the colorfastness to perspiration of all kinds of leather at all stages of processing.
- ✔ Simulated Perspiration, store at 4 degrees, transported at room temperature.
- ✔ This Perspiration is limited to the scientific research of professionals, and cannot be used for clinical diagnosis or treatment, and cannot be used for food or medicine, and cannot be stored in ordinary houses.
- ✔ For your safety and health, please wear a lab coat and disposable gloves.

100 mL : \$95.00

200 mL: \$135.00

500 mL: \$275.00

1000 mL: \$550.00



## Artificial PERSPIRATION NON-STABILIZED (BZ159)

Artificial Perspiration has a pH of 6.5 (we customize the pH on request without any additional cost, our artificial Eccrine Perspiration consists of amino acids, minerals, and various metabolites which simulates the composition, properties, and pH of the real Human eccrine sweat at Low price. We add preservatives, stabilizers, antifungal, and antibacterial reagents to enhance the shelf life. Please request it while making the order. This pH 6.5 formulation is used to determine the colorfastness of articles for common use to perspiration.

### ARTIFICIAL ECCRINE PERSPIRATION Features & Notes:

- ✔ Simulated Eccrine Perspiration is a sterile solution and can be used directly. It is used for the study of the Chemical resistance of automotive trim materials and components.
- ✔ Simulated Eccrine Perspiration, stored at 4 degrees, transported at room temperature.
- ✔ This Eccrine Perspiration is limited to the scientific research of professionals, and cannot be used for clinical diagnosis or treatment, and cannot be used for food or medicine, and cannot be stored in ordinary houses.
- ✔ For your safety and health, please wear a lab coat and disposable gloves.

100 mL : \$95.00

200 mL: \$135.00

500 mL: \$275.00

1000 mL: \$550.00





**Artificial PERSPIRATION**  
NOT STABILIZED (BZ149)

Artificial Perspiration is available in different pH values (we customize the pH on request without any additional cost, our artificial Eccrine Perspiration consists of amino acids, minerals, and various metabolites which simulates the composition, properties, and pH of the real Human eccrine sweat at Low price. We add preservatives, stabilizers, antifungal, and antibacterial reagents to enhance the shelf life. Please request it while making the order.

**Artificial Perspiration Features & Note**

- ✔ Simulated Perspiration is a sterile solution and can be used directly. ARTIFICIAL ECCRINE PERSPIRATION solution is used to determine the resistance to perspiration of unglazed spectacle frames designed for use with all prescription lenses and also to rimless mounts, semi-rimless mounts, and folding spectacle frames.
- ✔ Simulated Perspiration, store at 4 degrees, transported at room temperature.
- ✔ This Perspiration is limited to the scientific research of professionals, and cannot be used for clinical diagnosis or treatment, and cannot be used for food or medicine, and cannot be stored in ordinary houses.
- ✔ For your safety and health, please wear a lab coat and disposable gloves.

**100 mL : \$95.00**

**200 mL: \$135.00**

**500 mL: \$275.00**

**1000 mL: \$550.00**



**Artificial Perspiration**  
STABILIZED (BZ150)

Artificial Perspiration is available in different pH values (we customize the pH on request without any additional cost, our artificial Eccrine Perspiration consists of amino acids, minerals, and various metabolites which simulates the composition, properties, and pH of the real Human eccrine sweat at Low price. We add preservatives, stabilizers, antifungal, and antibacterial reagents to enhance the shelf life. Please request it while making the order.

**Artificial Perspiration Features & Note**

- ✔ Simulated Perspiration is a sterile solution and can be used directly. ARTIFICIAL ECCRINE PERSPIRATION solution is used to determine the resistance to perspiration of unglazed spectacle frames designed for use with all prescription lenses and also to rimless mounts, semi-rimless mounts, and folding spectacle frames.
- ✔ Simulated Perspiration, store at 4 degrees, transported at room temperature.
- ✔ This Perspiration is limited to the scientific research of professionals, and cannot be used for clinical diagnosis or treatment, and cannot be used for food or medicine, and cannot be stored in ordinary houses.
- ✔ For your safety and health, please wear a lab coat and disposable gloves.

**100 mL : \$95.00**

**200 mL: \$130.00**

**500 mL: \$275.00**

**1000 mL: \$550.00**





**Artificial PERSPIRATION**  
NOT STABILIZED (BZ147)

Artificial Perspiration is available in different pH values (we customize the pH on request without any additional cost, our artificial Eccrine Perspiration consists of amino acids, minerals, and various metabolites which simulates the composition, properties, and pH of the real Human eccrine sweat at Low price. We add preservatives, stabilizers, antifungal, and antibacterial reagents to enhance the shelf life. Please request it while making the order.

**Artificial Perspiration Features & Note**

- ✔ Simulated Perspiration is a sterile solution and can be used directly. ARTIFICIAL ECCRINE PERSPIRATION solution is used to determine the resistance to perspiration of unglazed spectacle frames designed for use with all prescription lenses and also to rimless mounts, semi-rimless mounts, and folding spectacle frames.
- ✔ Simulated Perspiration, store at 4 degrees, transported at room temperature.
- ✔ This Perspiration is limited to the scientific research of professionals, and cannot be used for clinical diagnosis or treatment, and cannot be used for food or medicine, and cannot be stored in ordinary houses.
- ✔ For your safety and health, please wear a lab coat and disposable gloves.

**100 mL : \$95.00**

**200 mL: \$135.00**

**500 mL: \$275.00**

**1000 mL: \$550.00**



**Artificial Perspiration**  
NOT STABILIZED, 200ML (BZ123)

Artificial Perspiration has a pH of 4.7 (we customize the pH on request without any additional cost, our artificial Eccrine Perspiration consists of amino acids, minerals, and various metabolites which simulates the composition, properties, and pH of the real Human eccrine sweat at Low price. We add preservatives, stabilizers, antifungal, and antibacterial reagents to enhance the shelf life. Please request it while making the order. This pH 4.7 formulation is used to determine corrosion (tarnishing, oxidation, and surface penetration) resistance

**Artificial Perspiration Features & Note:**

- ✔ Simulated Perspiration is a sterile solution and can be used directly.
- ✔ Simulated Perspiration, store at 4 degrees, transported at room temperature.
- ✔ This Perspiration is limited to the scientific research of professionals, and cannot be used for clinical diagnosis or treatment, and cannot be used for food or medicine, and cannot be stored in ordinary houses.
- ✔ For your safety and health, please wear a lab coat and disposable gloves.

**100 mL : \$95.00**

**200 mL: \$135.00**

**500 mL: \$275.00**

**1000 mL: \$550.00**





**Artificial PERSPIRATION**  
STABILIZED. (BZ127)

Artificial Perspiration has a pH of 4.7 (we customize the pH on request without any additional cost, our artificial Eccrine Perspiration consists of amino acids, minerals, and various metabolites which simulates the composition, properties, and pH of the real Human eccrine sweat at Low price. We add preservatives, stabilizers, antifungal, and antibacterial reagents to enhance the shelf life. Please request it while making the order. This pH 4.7 formulation is used to determine corrosion (tarnishing, oxidation, and surface penetration) resistance for gold alloy coverings on watch cases and

**Artificial Perspiration Features & Note:**

- ✔ Simulated Perspiration is a sterile solution and can be used directly.
- ✔ Simulated Perspiration, store at 4 degrees, transported at room temperature.
- ✔ This Perspiration is limited to the scientific research of professionals, and cannot be used for clinical diagnosis or treatment, and cannot be used for food or medicine, and cannot be stored in ordinary houses.
- ✔ For your safety and health, please wear a lab coat and disposable gloves.

**100 mL : \$95.00**

**200 mL: \$135.00**

**500 mL: \$275.00**

**1000 mL: \$550.00**



**Artificial Perspiration**  
STABILIZED. 200ML (BZ124)

Artificial Perspiration has a pH of 4.7 (we customize the pH on request without any additional cost, our artificial Eccrine Perspiration consists of amino acids, minerals, and various metabolites which simulates the composition, properties, and pH of the real Human eccrine sweat at Low price. We add preservatives, stabilizers, antifungal, and antibacterial reagents to enhance the shelf life. Please request it while making the order. This pH 4.7 formulation is used to determine corrosion (tarnishing, oxidation, and surface penetration) resistance

**Artificial Perspiration Features & Note:**

- ✔ Simulated Perspiration is a sterile solution and can be used directly.
- ✔ Simulated Perspiration, store at 4 degrees, transported at room temperature.
- ✔ This Perspiration is limited to the scientific research of professionals, and cannot be used for clinical diagnosis or treatment, and cannot be used for food or medicine, and cannot be stored in ordinary houses.
- ✔ For your safety and health, please wear a lab coat and disposable gloves.

**100 mL : \$95.00**

**200 mL: \$135.00**

**500 mL: \$275.00**

**1000 mL: \$550.00**



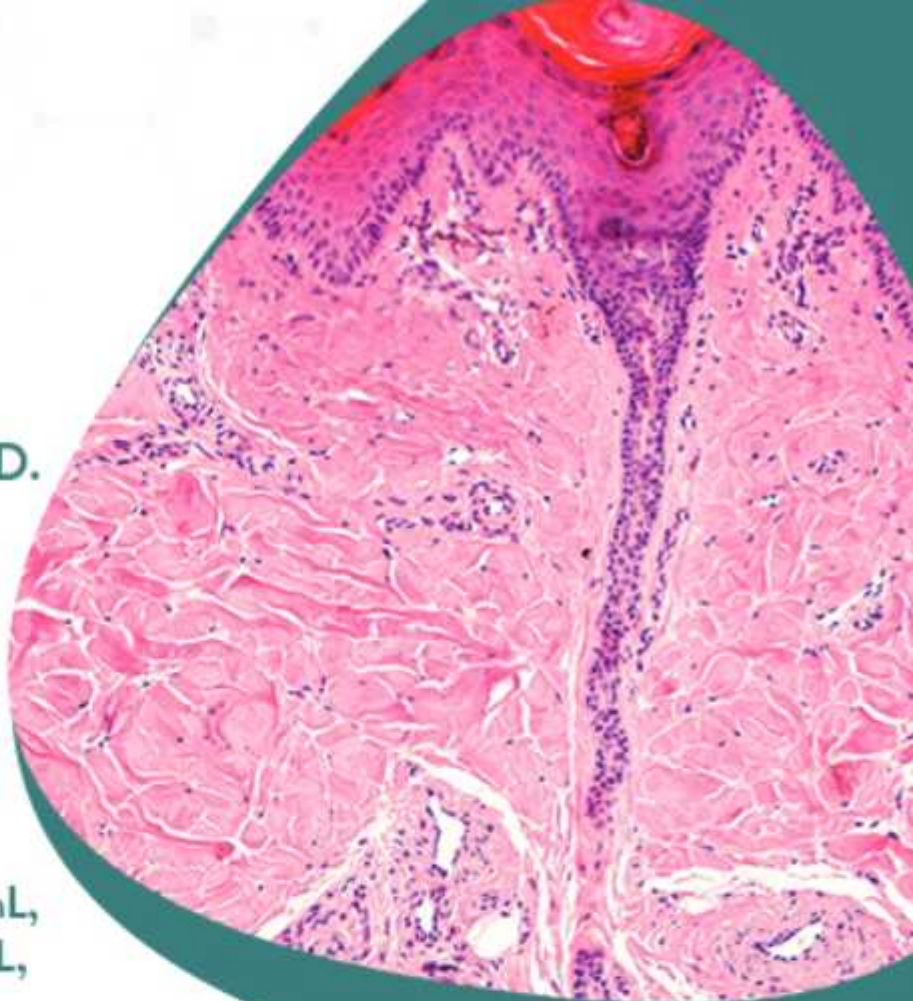


# Artificial Perspiration

NOT STABILIZED.  
(BZ123)



Pack Size: 100 mL,  
200 mL, 500 mL,  
1000 mL



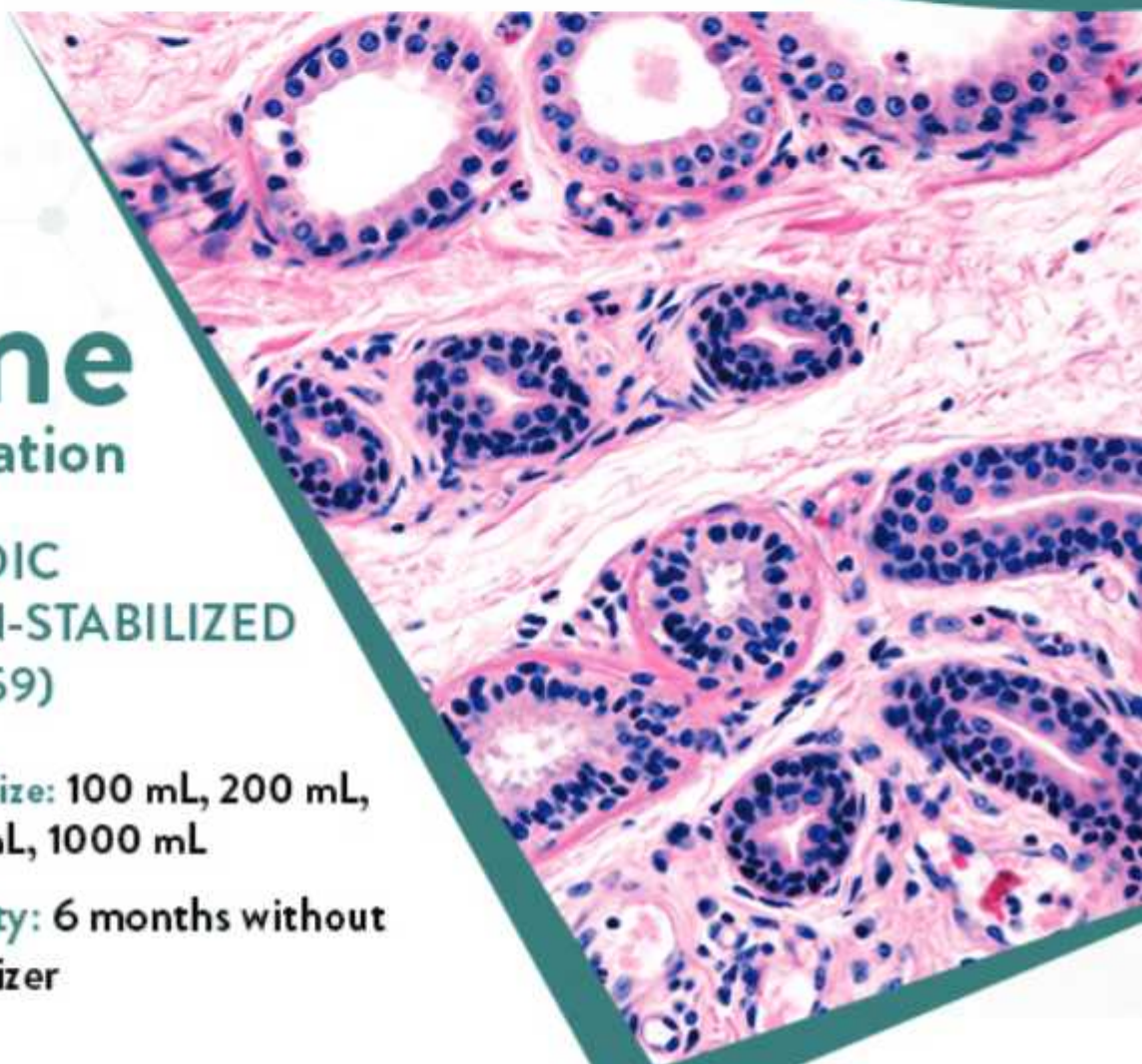
# Artificial Eccrine Perspiration

ACIDIC  
NON-STABILIZED  
(BZ159)



Pack Size: 100 mL, 200 mL,  
500 mL, 1000 mL

Validity: 6 months without  
Stabilizer





## Artificial PERSPIRATION CUSTOM PH (BZ121)

Artificial Perspiration has a pH of 6.5 (we customize the pH on request without any additional cost, our artificial Eccrine Perspiration consists of amino acids, minerals, and various metabolites which simulates the composition, properties, and pH of the real Human eccrine sweat at Low price. We add preservatives, stabilizers, antifungal, and antibacterial reagents to enhance the shelf life. Please request it while making the order. This pH 6.5 formulation is used to stimulate the release of Nickel from all post assemblies which are inserted into pierced ears and other pierced parts of the human

### Artificial Perspiration Features & Note:

- ✔ Simulated Perspiration is a sterile solution and can be used directly.
- ✔ Simulated Perspiration, store at 4 degrees, transported at room temperature.
- ✔ This Perspiration is limited to the scientific research of professionals, and cannot be used for clinical diagnosis or treatment, and cannot be used for food or medicine, and cannot be stored in ordinary houses.
- ✔ For your safety and health, please wear a lab coat and disposable gloves.

100 mL : \$95.00

200 mL : \$135.00

500 mL : \$275.00

1000 mL : \$550.00



## Artificial Perspiration STABILIZED (BZ120)

Artificial Perspiration has a pH of 6,5 (we customize the pH on request without any additional cost, our artificial Eccrine Perspiration consists of amino acids, minerals, and various metabolites which simulates the composition, properties, and pH of the real Human eccrine sweat at Low price. We add preservatives, stabilizers, antifungal, and antibacterial reagents to enhance the shelf life. Please request it while making the order. This pH 6,5 formulation is used to stimulate the release of Nickel from all post assemblies which are inserted into

### Artificial Perspiration Features & Note:

- ✔ Simulated Perspiration is a sterile solution and can be used directly.
- ✔ Simulated Perspiration, store at 4 degrees, transported at room temperature.
- ✔ This Perspiration is limited to the scientific research of professionals, and cannot be used for clinical diagnosis or treatment, and cannot be used for food or medicine, and cannot be stored in ordinary houses.
- ✔ For your safety and health, please wear a lab coat and disposable gloves.

100 mL : \$95.00

200 mL : \$135.00

500 mL : \$275.00

1000 mL : \$550.00





**Artificial PERSPIRATION**  
STABILIZED (BZ122)

Artificial Perspiration has a pH of 6.5 (we customize the pH on request without any additional cost, our artificial Eccrine Perspiration consists of amino acids, minerals, and various metabolites which simulates the composition, properties, and pH of the real Human eccrine sweat at Low price. We add preservatives, stabilizers, antifungal, and antibacterial reagents to enhance the shelf life. Please request it while making the order. This pH 6.5 formulation is used to stimulate the release of Nickel from all post assemblies which are inserted into pierced ears and other pierced parts of the human

**Artificial Perspiration Features & Note:**

- ✔ Simulated Perspiration is a sterile solution and can be used directly.
- ✔ Simulated Perspiration, store at 4 degrees, transported at room temperature.
- ✔ This Perspiration is limited to the scientific research of professionals, and cannot be used for clinical diagnosis or treatment, and cannot be used for food or medicine, and cannot be stored in ordinary houses.
- ✔ For your safety and health, please wear a lab coat and disposable gloves.

**100 mL : \$95.00**

**200 mL: \$135.00**

**500 mL: \$275.00**

**1000 mL: \$550.00**



**Artificial Perspiration**  
NOT STABILIZED (BZ116)

Artificial Sebum consists of amino acids, minerals, and various metabolites such as Oleic acid as an emulsifying agent which simulates the composition, properties, and pH of the real Human Sebum. Buy eccrine sweat at Low price. We add preservatives, stabilizers, antifungal, and antibacterial reagents to enhance the shelf life. Please request it while making the order.

**Artificial Sebum Features & Note:**

- ✔ Simulated Sebum is a sterile solution and can be used directly. Our Artificial Sebum provides the reliability, reproducibility, and convenience needed for testing.
- ✔ Simulated Sebum, store at 4 degrees, transported at room temperature.
- ✔ This Sebum emulsion is limited to the scientific research of professionals, and cannot be used for clinical diagnosis or treatment, and cannot be used for food or medicine, and cannot be stored in ordinary houses.
- ✔ For your safety and health, please wear a lab coat and disposable gloves.

**100 mL : \$275.00**

**200 mL: \$525.00**

**500 mL: \$925.00**

**1000 mL: \$1,750.00**





Artificial Sebum consists of amino acids, minerals, and various metabolites such as Oleic acid as an emulsifying agent which simulates the composition, properties, and pH of the real Human Sebum. Buy eccrine sweat at Low price. We add preservatives, stabilizers, antifungal, and antibacterial reagents to enhance the shelf life. Please request it while making the order.

#### Artificial Sebum Features & Note:

- ✔ Simulated Sebum is a sterile solution and can be used directly. Our Artificial Sebum provides the reliability, reproducibility, and convenience needed for testing.
- ✔ Simulated Sebum, store at 4 degrees, transported at room temperature.
- ✔ This Sebum emulsion is limited to the scientific research of professionals, and cannot be used for clinical diagnosis or treatment, and cannot be used for food or medicine, and cannot be stored in ordinary houses.
- ✔ For your safety and health, please wear a lab coat and disposable gloves.

**100 mL : \$275.00**

**200 mL: \$475.00**

**500 mL: \$925.00**

**1000 mL: \$1,750.00**

### Artificial PERSPIRATION STABILIZED (BZ117)



Artificial Perspiration has a pH of 6.5 (we customize the pH on request without any additional cost, our artificial Eccrine Perspiration consists of amino acids, minerals, and various metabolites which simulates the composition, properties, and pH of the real Human eccrine sweat at Low price. We add preservatives, stabilizers, antifungal, and antibacterial reagents to enhance the shelf life. Please request it while making the order. This pH 6.5 formulation is used to determine the colorfastness of articles for common use to perspiration.

#### Artificial Perspiration Features & Note

- ✔ Simulated Perspiration is a sterile solution and can be used directly. Artificial Sweat for COLORFASTNESS OF ARTICLES of COMMON USE.
- ✔ Simulated Perspiration, store at 4 degrees, transported at room temperature.
- ✔ This Perspiration is limited to the scientific research of professionals, and cannot be used for clinical diagnosis or treatment, and cannot be used for food or medicine, and cannot be stored in ordinary houses.
- ✔ For your safety and health, please wear a lab coat and disposable gloves.

**100 mL : \$95.00**

**200 mL: \$135.00**

**500 mL: \$275.00**

**1000 mL: \$550.00**

### Artificial Perspiration NOT STABILIZED, 200ML (BZ133)





**Artificial Perspiration**  
STABILIZED, 200ML (BZ134)

Artificial Perspiration has a pH of 6.5 (we customize the pH on request without any additional cost, our artificial Eccrine Perspiration consists of amino acids, minerals, and various metabolites which simulates the composition, properties, and pH of the real Human eccrine sweat at Low price. We add preservatives, stabilizers, antifungal, and antibacterial reagents to enhance the shelf life. Please request it while making the order. This pH 6.5 formulation is used to determine the colorfastness of articles for common use to perspiration.

**Artificial Perspiration Features & Note**

- ✔ Simulated Perspiration is a sterile solution and can be used directly, Artificial Sweat for COLORFASTNESS OF ARTICLES of COMMON USE.
- ✔ Simulated Perspiration, store at 4 degrees, transported at room temperature.
- ✔ This Perspiration is limited to the scientific research of professionals, and cannot be used for clinical diagnosis or treatment, and cannot be used for food or medicine, and cannot be stored in ordinary houses.
- ✔ For your safety and health, please wear a lab coat and disposable gloves.

**100 mL : \$95.00**

**200 mL: \$135.00**

**500 mL: \$275.00**

**1000 mL: \$550.00**



**Artificial Perspiration**  
NOT STABILIZED 200ML (BZ131)

Artificial Perspiration has a pH of 6.5 (we customize the pH on request without any additional cost, our artificial Eccrine Perspiration consists of amino acids, minerals, and various metabolites which simulates the composition, properties, and pH of the real Human eccrine sweat at Low price. We add preservatives, stabilizers, antifungal, and antibacterial reagents to enhance the shelf life. Please request it while making the order. This pH 6.5 formulation is used to determine the colorfastness of articles for common use to perspiration.

**Artificial Perspiration Features & Note**

- ✔ Simulated Perspiration is a sterile solution and can be used directly, Artificial Sweat for COLORFASTNESS OF ARTICLES of COMMON USE.
- ✔ Simulated Perspiration, store at 4 degrees, transported at room temperature.
- ✔ This Perspiration is limited to the scientific research of professionals, and cannot be used for clinical diagnosis or treatment, and cannot be used for food or medicine, and cannot be stored in ordinary houses.
- ✔ For your safety and health, please wear a lab coat and disposable gloves.

**100 mL : \$95.00**

**200 mL: \$135.00**

**500 mL: \$275.00**

**1000 mL: \$550.00**





## Artificial Perspiration STABILIZED 200ML (BZ132)

Artificial Perspiration has a pH of 6.5 (we customize the pH on request without any additional cost, our artificial Eccrine Perspiration consists of amino acids, minerals, and various metabolites which simulates the composition, properties, and pH of the real Human eccrine sweat at Low price. We add preservatives, stabilizers, antifungal, and antibacterial reagents to enhance the shelf life. Please request it while making the order. This pH 6.5 formulation is used to determine the colorfastness of articles for common use to perspiration.

### Artificial Perspiration Features & Note

- ✓ Simulated Perspiration is a sterile solution and can be used directly. Artificial Sweat for COLORFASTNESS OF ARTICLES of COMMON USE.
- ✓ Simulated Perspiration, store at 4 degrees, transported at room temperature.
- ✓ This Perspiration is limited to the scientific research of professionals, and cannot be used for clinical diagnosis or treatment, and cannot be used for food or medicine, and cannot be stored in ordinary houses.
- ✓ For your safety and health, please wear a lab coat and disposable gloves.

100 mL : \$95.00

200 mL : \$135.00

500 mL : \$275.00

1000 mL : \$550.00



## Artificial Perspiration (BZ119)

Artificial Perspiration has a pH of 6.5 (we customize the pH on request without any additional cost, our artificial Eccrine Perspiration consists of amino acids, minerals, and various metabolites which simulates the composition, properties, and pH of the real Human eccrine sweat at Low price. We add preservatives, stabilizers, antifungal, and antibacterial reagents to enhance the shelf life. Please request it while making the order. This pH 6.5 formulation is used to stimulate the release of Nickel from all post assemblies which are inserted into

### Artificial Perspiration Features & Note:

- ✓ Simulated Perspiration is a sterile solution and can be used directly.
- ✓ Simulated Perspiration, store at 4 degrees, transported at room temperature.
- ✓ This Perspiration is limited to the scientific research of professionals, and cannot be used for clinical diagnosis or treatment, and cannot be used for food or medicine, and cannot be stored in ordinary houses.
- ✓ For your safety and health, please wear a lab coat and disposable gloves.

100 mL : \$95.00

200 mL : \$135.00

500 mL : \$275.00

1000 mL : \$550.00



# ARTIFICIAL SALIVA

Artificial saliva is a saliva substitute that temporarily moistens and lubricates the mouth and creates a protective film to help reduce the risk of mechanical trauma that can result from chronic dry mouth.





Artificial Saliva is prepared and ready to use according to AFNOR NF 591-141 standard procedure and is intended for testing the biodegradability of dental metal alloys. For this purpose, we especially designed Artificial Saliva Formulation as per the AFNOR NF 591-141 standard procedure. The pH of the solution is 7.8. We also provide ready-to-use powder that needs to be soluble in sterile water before use.

#### Artificial Saliva AFNOR NF 591-141

- ✔ Simulated Saliva is a sterile solution and can be used directly. It is used for the study of Pharmaceutical, Medical, Dental, Metal Alloys, Drug Testing, Colorfastness, Biodegradability or Hospital Research, etc.
- ✔ Simulated Saliva, store at 4 degrees, transported at room temperature.
- ✔ This Saliva is limited to the scientific research of professionals, and cannot be used for clinical diagnosis or treatment, and cannot be used for food or medicine, and cannot be stored in ordinary houses.
- ✔ For your safety and health, please wear a lab coat and disposable gloves.

100 mL : \$95.00

200 mL: \$135.00

500 mL: \$275.00

1000 mL: \$550.00

### Artificial SALIVA – AFNOR NF 591-141 (BZ106)



Artificial Saliva or Simulated Saliva formulation is only used in the field of scientific research and for in vitro use only. It is specially formulated for medical and dental research based on thorough research studies and Literature surveys.

#### Artificial Saliva

- ✔ Simulated Saliva is a sterile solution and can be used directly. It is used for the study of Pharmaceutical, Medical, Dental, Metal Alloys, Drug Testing, Colorfastness, Biodegradability or Hospital Research, etc.
- ✔ Simulated Saliva, store at 4 degrees, transported at room temperature.
- ✔ This Saliva is limited to the scientific research of professionals, and cannot be used for clinical diagnosis or treatment, and cannot be used for food or medicine, and cannot be stored in ordinary houses.
- ✔ For your safety and health, please wear a lab coat and disposable gloves.

100 mL : \$95.00

200 mL: \$135.00

500 mL: \$275.00

1000 mL: \$550.00

### Artificial SALIVA FOR MEDICAL AND DENTAL RESEARCH (BZ109)





**Artificial SALIVA FOR PHARMACEUTICAL RESEARCH (BZ108)**

Artificial Saliva is formulated according to literature for pharmaceutical research such as studies of drug dissolution and drug delivery through the oral mucosa. This is a ready-to-use formulation. The pH of the solution is 6.8. We also provide ready-to-use dried powder that needs to be soluble in sterile water before use.

**Artificial Saliva for Pharmaceutical Research**

- ✔ Simulated Saliva is a sterile solution and can be used directly. It is used for the study of Pharmaceutical, Medical, Dental, Metal Alloys, Drug Testing, Colorfastness, Biodegradability or Hospital Research, etc.
- ✔ Simulated Saliva, store at 4 degrees, transported at room temperature.
- ✔ This Saliva is limited to the scientific research of professionals, and cannot be used for clinical diagnosis or treatment, and cannot be used for food or medicine, and cannot be stored in ordinary houses.
- ✔ For your safety and health, please wear a lab coat and disposable gloves.

**100 mL : \$95.00**

**200 mL: \$135.00**

**500 mL: \$275.00**

**1000 mL: \$550.00**



**Artificial SALIVA OR SIMULATED SALIVA (BZ184)**

Artificial Saliva or Simulated Saliva formulation is only used in the field of scientific research and for in vitro use only.

**Artificial Saliva Features & Note:**

- ✔ Simulated Saliva is a sterile solution and can be used directly. It is used for the study of Pharmaceutical, Medical, Dental, or Hospital Research, etc.
- ✔ Simulated Saliva, store at 4 degrees, transported at room temperature.
- ✔ This Saliva is limited to the scientific research of professionals, and cannot be used for clinical diagnosis or treatment, and cannot be used for food or medicine, and cannot be stored in ordinary houses.
- ✔ For your safety and health, please wear a lab coat and disposable gloves.

**100 mL : \$95.00**

**200 mL: \$135.00**

**500 mL: \$275.00**

**1000 mL: \$550.00**





**Artificial SALIVA**  
(BZ107)

Artificial Saliva is ready to use and prepared according to DIN 53160:2010-10 standard procedure. DIN 53160 specifies the method to determine the colorfastness of products intended to be taken into the mouth. The pH of the solution is 6.8. We also provide ready-to-use powder that needs to be soluble in sterile water before use.

**Artificial Saliva Features & Notes:**

- ✔ Simulated Saliva is a sterile solution and can be used directly. It is used for the study of Pharmaceutical, Medical, Dental, Metal Alloys, Drug Testing, Colorfastness, Biodegradability or Hospital Research, etc.
- ✔ Simulated Saliva, store at 4 degrees, transported at room temperature.
- ✔ This Saliva is limited to the scientific research of professionals, and cannot be used for clinical diagnosis or treatment, and cannot be used for food or medicine, and cannot be stored in ordinary houses.
- ✔ For your safety and health, please wear a lab coat and disposable gloves.

**100 mL : \$95.00**

**200 mL: \$135.00**

**500 mL: \$275.00**

**1000 mL: \$550.00**



**Artificial SALIVA**  
200ML (BZ105)

This ready-to-use solution closely resembles the mineral composition of natural saliva and can be used for testing a wide variety of products, including dental metal alloys. This formulation is at pH 4.9 and should be stored refrigerated.

**Artificial Saliva Features & Note:**

- ✔ Simulated Saliva is a sterile solution and can be used directly. It is used for the study of Corrosion, Pharmaceutical, Medical, Dental, Metal Alloys, Drug Testing, Colorfastness, Biodegradability or Hospital Research, etc.
- ✔ Simulated Saliva, store at 4 degrees, transported at room temperature.
- ✔ This Saliva is limited to the scientific research of professionals, and cannot be used for clinical diagnosis or treatment, and cannot be used for food or medicine, and cannot be stored in ordinary houses.
- ✔ For your safety and health, please wear a lab coat and disposable gloves.

**100 mL : \$95.00**

**200 mL: \$135.00**

**500 mL: \$235.00**

**1000 mL: \$550.00**





## ARTIFICIAL URINE

This artificial urine is designed for testing metallic biomaterials used to produce urological implants and catheters. This convenient product is a ready-to-use solution.



## ARTIFICIAL URINE NON STABILIZED (BZ101)

Artificial Urine or Simulated Urine is designed for Corrosion Testing of Urological Implants research. Our Artificial Urine formulation has a similar composition and ingredients simulate the biological contents, mineral composition, enzymes, and pH of natural urine. This solution is only intended for product testing and research, and not for in vivo medical use.

### Artificial Urine Features & Note:

- ✓ Simulated Urine is a sterile solution and can be used directly. It is used for the study and testing of catheters, Urological implants; and biomedical operational, bio-metallic parts, etc.
- ✓ Simulated Urine, store at 4 degrees, transported at room temperature.
- ✓ This Urine is limited to the scientific research of professionals, and cannot be used for clinical diagnosis or treatment, and cannot be used for food or medicine, and cannot be stored in ordinary houses.
- ✓ For your safety and health, please wear a lab coat and disposable gloves.

100 mL : \$95.00

200 mL: \$135.00

500 mL: \$275.00

1000 mL: \$550.00



## Artificial URINE MEDIUM FOR GROWING UROLOGICAL (BZ103)

Simulated Urine or Artificial Urine solution is designed in such a way that supports the growth of various urinary tract pathogens and it has pH 6.5. Our Artificial Urine formulation has a similar composition and ingredients simulate the biological contents, mineral composition, enzymes, and pH of natural urine. This ready-to-use formulation mimics real human urine composition. This formulation can be stored at room temperature and has a pH of 6.5. This solution is only intended to be used for clinical studies as well as for product

### Artificial Urine Medium for Growing Urological Pathogens (BZ103)

- ✓ pH Value: 6.5 (customizable)
- ✓ Shelf Life: 6 months for Not Stabilized. At -20 Deg C, in the Frozen stage, shelf life is up to 1 year for non-stabilized versions.
- ✓ Artificial Urine or Simulated Urine formulation is only used in the field of scientific research and for in vitro use only.
- ✓ Pack Size: 100 mL, 200 mL, 500 mL, 1000 mL

100 mL : \$95.00

200 mL: \$135.00

500 mL: \$275.00

1000 mL: \$550.00





## ARTIFICIAL URINE STABILIZED (BZ104)

Simulated Urine or Artificial Urine is designed for Corrosion Testing of Urological Implants research. Our Artificial Urine formulation has a similar composition and ingredients simulate the biological contents, mineral composition, enzymes, and pH of natural urine. This ready-to-use formulation contains a non-toxic stabilizer that prevents microbial and fungal growth and can be stored at room temperature and it mimics real human urine. This formulation can be stored at room temperature and has a pH of 6.5. This solution is only intended for product testing and research, and not for

### Artificial Urine Features & Note:

- ✓ Simulated Urine is a sterile solution and can be used directly. It is used for the study and testing of catheters, Urological implants, and biomedical operational, bio-metallic parts, etc.
- ✓ Simulated Urine, store at 4 degrees, transported at room temperature.
- ✓ This Urine is limited to the scientific research of professionals, and cannot be used for clinical diagnosis or treatment, and cannot be used for food or medicine, and cannot be stored in ordinary houses.
- ✓ For your safety and health, please wear a lab coat and disposable gloves,

100 mL : \$95.00

200 mL: \$135.00

500 mL: \$275.00

1000 mL: \$550.00



## Artificial URINE SIMULATED URINE (BZ186)

This ready-to-use solution closely resembles the composition of human Urine and can be used for clinical studies as well as for product testing. This formulation supports the growth of a wide range of urinary pathogens, and it is also capable of forming crystals similar to those found in natural urinary tract infections. It can be used as a negative control in laboratory testing. The pH of the Artificial Urine Medium is 6.5. This product is stored frozen.

### Artificial Urine for Corrosion Testing of Urological Implants, Stabilize

- ✓ Sodium Chloride 6.773 g/L
- ✓ Sodium Phosphate Monobasic, Dihydrate 1.33 g/L
- ✓ Potassium Chloride 6.065 g/L
- ✓ Potassium Chloride 6.065 g/L

100 mL : \$95.00

200 mL: \$135.00

500 mL: \$275.00

1000 mL: \$550.00





**ARTIFICIAL URINE**  
(BZ102)

Simulated Urine or Artificial Urine is designed for STERILE URETHRAL CATHETERS Testing of Urological Implants research. Our Artificial Urine formulation has a similar composition and ingredients simulate the biological contents, mineral composition, enzymes, and pH of natural urine. This ready-to-use formulation contains and has a pH of 6.6. This solution is only intended for product testing and research, and not for in vivo medical use.

**Artificial Urine Features & Note:**

- ✔ Simulated Urine is a sterile solution and can be used directly. It is used for the study and testing of catheters, Urological implants, and biomedical operational, bio-metallic parts, etc.
- ✔ Simulated Urine, store at 4 degrees, transported at room temperature.
- ✔ This Urine is limited to the scientific research of professionals, and cannot be used for clinical diagnosis or treatment, and cannot be used for food or medicine, and cannot be stored in ordinary houses.
- ✔ For your safety and health, please wear a lab coat and disposable gloves.

**100 mL : \$95.00**

**200 mL: \$135.00**

**500 mL: \$275.00**

**1000 mL: \$550.00**



**Artificial URINE (BZ102S), STABILIZED**

Simulated Urine or Artificial Urine is designed for STERILE URETHRAL CATHETERS Testing of Urological Implants research. Our Artificial Urine formulation has a similar composition and ingredients simulate the biological contents, mineral composition, enzymes, and pH of natural urine. This ready-to-use formulation contains and has a pH of 6.6. This solution is only intended for product testing and research, and not for in vivo medical use.

**Artificial Urine Features & Note:**

- ✔ Simulated Urine is a sterile solution and can be used directly. It is used for the study and testing of catheters, Urological implants, and biomedical operational, bio-metallic parts, etc.
- ✔ Simulated Urine, store at 4 degrees, transported at room temperature.
- ✔ This Urine is limited to the scientific research of professionals, and cannot be used for clinical diagnosis or treatment, and cannot be used for food or medicine, and cannot be stored in ordinary houses.
- ✔ For your safety and health, please wear a lab coat and disposable gloves.

**100 mL : \$95.00**

**200 mL: \$135.00**

**500 mL: \$275.00**

**1000 mL: \$550.00**





Simulated Urine or Artificial Urine is designed for Corrosion Testing of Urological Implants research. Our Artificial Urine formulation has a similar composition and ingredients simulate the biological contents, mineral composition, enzymes, and pH of natural urine. This ready-to-use formulation contains a non-toxic stabilizer that prevents microbial and fungal growth and can be stored at room temperature and it mimics real human urine. This formulation can be stored at room temperature and has a pH of 6.0. This solution is only intended for product testing and research, and not for

#### Artificial Urine Features & Note:

- ✔ Simulated Urine is a sterile solution and can be used directly. It is used for the study and testing of catheters, Urological implants, and biomedical operational, bio-metallic parts, etc.
- ✔ Simulated Urine, store at 4 degrees, transported at room temperature.
- ✔ This Urine is limited to the scientific research of professionals, and cannot be used for clinical diagnosis or treatment, and cannot be used for food or medicine, and cannot be stored in ordinary houses.
- ✔ For your safety and health, please wear a lab coat and disposable gloves.

100 mL : \$95.00

200 mL: \$135.00

500 mL: \$275.00

1000 mL: \$550.00

## SIMULATED URINE

STABILIZED (BZ188)



# SIMULATED FLUID

Gamble's solution represents the interstitial fluid deep within the lung and is used to simulate different lung conditions. It is used in pulmonary drug delivery studies as well as in studies of particles inhalation effects.





## ARTIFICIAL AMNIOTIC FLUID (BZ259)

Amniotic fluid is a clear, yellow fluid that is found within the first 12 days following conception within the amniotic sac. It surrounds the growing baby in the uterus. Amniotic fluid has many important functions and is vital for healthy fetal development. However, if the amount of amniotic fluid inside the uterus is too little or too great, complications can occur.

### Artificial Amniotic Fluid Features & Notes:

- ✔ Simulated Amniotic Fluid is a sterile solution and can be used directly.
- ✔ Simulated Amniotic Fluid, stored at 4 degrees, transported at room temperature.
- ✔ This Amniotic Fluid is limited to the scientific research of professionals, and cannot be used for clinical diagnosis or treatment, and cannot be used for food or medicine, and cannot be stored in ordinary houses.
- ✔ For your safety and health, please wear a lab coat and disposable gloves.

100 mL : \$175.00

200 mL: \$275.00

500 mL: \$525.00

1000 mL: \$950.00



## ARTIFICIAL AQUEOUS HUMOUR FLUID (BZ276)

The aqueous humour is a transparent water-like fluid similar to Plasma, but containing low protein concentrations. It is secreted from the Ciliary body, a structure supporting the Lens. It fills both the Anterior and the Posterior chambers of the eye and is not to be confused with the vitreous humour, which is located in the space between the lens and the retina, also known as the posterior cavity or vitreous chamber.

### Artificial Aqueous Humour Fluid Features & Notes:

- ✔ Artificial Aqueous Humour Fluid is a sterile solution and can be used directly.
- ✔ Artificial Aqueous Humour Fluid, stored at 4 degrees, transported at room temperature.
- ✔ This Artificial Aqueous Humour Fluid is limited to the scientific research of professionals, and cannot be used for clinical diagnosis or treatment, and cannot be used for food or medicine, and cannot be stored in ordinary houses.
- ✔ For your safety and health, please wear a lab coat and disposable gloves.

100 mL : \$175.00

200 mL: \$525.00

500 mL: \$525.00

1000 mL: \$950.00





**ARTIFICIAL BONE MARROW FLUID (BZ268)**

Bone marrow is a semi-solid tissue found within the spongy or cancellous portions of bones. In birds and mammals, bone marrow is the primary site of new blood cell production or hematopoiesis. It is composed of hematopoietic cells, marrow adipose tissue, and supportive stromal cells. In adult humans, bone marrow is primarily located in the ribs, vertebrae, sternum, and bones of the pelvis. Bone marrow comprises approximately 5% of total body mass in healthy adult humans, such that a man weighing 73 kg (161 lbs) will have around 3.65 kg (8 lbs) of bone marrow.

**Artificial Bone Marrow Fluid Features & Notes:**

- ✔ Artificial Bone Marrow Fluid is a sterile solution and can be used directly.
- ✔ Artificial Bone Marrow Fluid, stored at 4 degrees, transported at room temperature.
- ✔ This Artificial Bone Marrow Fluid is limited to the scientific research of professionals, and cannot be used for clinical diagnosis or treatment, and cannot be used for food or medicine, and cannot be stored in ordinary houses.
- ✔ For your safety and health, please wear a lab coat and disposable gloves.

**100 mL : \$175.00**

**200 mL: \$275.00**

**500 mL: \$525.00**

**1000 mL: \$950.00**



**ARTIFICIAL BRAIN FLUID (BZ256)**

Artificial Brain Fluid, is a colorless and transparent liquid, which can simulate the human Brain and cerebrospinal fluid environment, also known as cerebrospinal fluid simulation fluid. The Brain fluid or artificial cerebrospinal fluid is a sterile solution, which is sterilized using a 0.22 µm sterile filter membrane and can be used directly.

**Brain Fluid Features & Notes:**

- ✔ Simulated Brain Fluid is a sterile solution and can be used directly.
- ✔ Simulated Brain Fluid, stored at 4 degrees, transported at room temperature.
- ✔ This Brain Fluid is limited to the scientific research of professionals, and cannot be used for clinical diagnosis or treatment, and cannot be used for food or medicine, and cannot be stored in ordinary houses.
- ✔ For your safety and health, please wear a lab coat and disposable gloves.

**100 mL : \$175.00**

**200 mL: \$275.00**

**500 mL: \$525.00**

**1000 mL: \$950.00**





**ARTIFICIAL BREAST MILK**  
(BZ255)

Breast milk contains high concentrations of lipids and proteins and has a pH of 6.35-7.35, which is somewhat lower than that of plasma. Many drugs being used by the mother that is present in her plasma are likely to be present in her breast milk, often at concentrations greater than those in her plasma. Therefore, the presence of drugs in breast milk is a marker for the likely presence of these drugs in the breast-fed infant.

**Artificial Breast Milk Features & Notes:**

- ✔ Simulated Breast Milk is a sterile solution and can be used directly.
- ✔ Simulated Breast Milk, stored at 4 degrees, transported at room temperature.
- ✔ This Breast Milk is limited to the scientific research of professionals, and cannot be used for clinical diagnosis or treatment, and cannot be used for food or medicine, and cannot be stored in ordinary houses.
- ✔ For your safety and health, please wear a lab coat and disposable gloves.

**100 mL : \$175.00**

**200 mL: \$275.00**

**500 mL: \$525.00**

**1000 mL: \$950.00**



**ARTIFICIAL BRONCHOALVEOLAR LAVAGE (BAL) FLUID (BZ305)**

This simulated fluid is only used in the field of scientific research and For in vitro use only.

**Brain Fluid Features & Notes:**

- ✔ Simulated Bronchoalveolar lavage (BAL) Fluid is a sterile solution and can be used directly.
- ✔ Simulated Bronchoalveolar lavage (BAL) Fluid, stored at 4 degrees, transported at room temperature.
- ✔ This Bronchoalveolar lavage (BAL) Fluid is limited to the scientific research of professionals, and cannot be used for clinical diagnosis or treatment, and cannot be used for food or medicine, and cannot be stored in ordinary houses.
- ✔ For your safety and health, please wear a lab coat and disposable gloves.

**100 mL : \$175.00**

**200 mL: \$275.00**

**500 mL: \$525.00**

**1000 mL: \$950.00**





**ARTIFICIAL CANINE SALIVA**  
(BZ297)

This simulated fluid is only used in the field of scientific research and For in vitro use only. Not for Drug and Not for In Vivo Use.

**Artificial Canine Saliva Features & Notes:**

- ✔ Artificial Canine Saliva is a sterile solution and can be used directly.
- ✔ Artificial Canine Saliva, stored at 4 degrees, transported at room temperature.
- ✔ This Artificial Canine Saliva is limited to the scientific research of professionals, and cannot be used for clinical diagnosis or treatment, and cannot be used for food or medicine, and cannot be stored in ordinary houses.
- ✔ For your safety and health, please wear a lab coat and disposable gloves.

**100 mL : \$175.00**

**200 mL: \$275.00**

**500 mL: \$525.00**

**1000 mL: \$950.00**



**ARTIFICIAL CEREBROSPINAL SOLUTION**  
(ACSF, STERILE) (BZ178)

Artificial Cerebrospinal Fluid, is a colorless and transparent liquid, which can simulate the human cerebrospinal fluid environment, also known as cerebrospinal fluid simulation fluid. The artificial cerebrospinal fluid is a sterile solution, which is sterilized using a 0.22 μm sterile filter membrane and can be used directly.

**Artificial Cerebrospinal Solution Feature & Notes:**

- ✔ Artificial cerebrospinal fluid (ACSF) is a sterile solution and can be used directly.
- ✔ Artificial cerebrospinal fluid (ACSF), stored at 4 degrees, transported at room temperature, frozen storage is prohibited.
- ✔ This product is limited to the scientific research of professionals, and cannot be used for clinical diagnosis or treatment, and cannot be used for food or medicine, and cannot be stored in ordinary houses.
- ✔ For your safety and health, please wear a lab coat and disposable gloves.

**100 mL : \$95.00**

**200 mL: \$135.00**

**500 mL: \$275.00**

**1000 mL: \$550.00**





**ARTIFICIAL CERUMEN (NOT STABILIZED)**  
(BZ171)

Artificial Cerumen, also known as ear wax, is a waxy substance secreted in the ear canal that protects and lubricates the ear canal and assists in cleaning by trapping dirt and dead skin cells. Biochemazone™ offers artificial ear wax that can be used for testing hearing aids, earbuds, and other electronic devices meant to be used in the ears.

**Simulated Cerumen Feature & Notes:**

- ✔ Simulated Cerumen or Artificial Ear wax is a sterile solution and can be used directly.
- ✔ Simulated Cerumen or Artificial Ear Wax, stored at 4 degrees, transported at room temperature.
- ✔ This product is limited to the scientific research of professionals, and cannot be used for clinical diagnosis or treatment, and cannot be used for food or medicine, and cannot be stored in ordinary houses.
- ✔ For your safety and health, please wear a lab coat and disposable gloves.

**100 gm : \$450.00**

**200 gm : \$750.00**

**50 gm : \$250.00**



**ARTIFICIAL CERUMEN (STABILIZED)  
OR SYNTHETIC EARWAX 50G (BZ172)**

Artificial Cerumen, also known as ear wax, is a waxy substance secreted in the ear canal that protects and lubricates the ear canal and assists in cleaning by trapping dirt and dead skin cells. Biochemazone™ offers artificial ear wax that can be used for testing hearing aids, earbuds, and other electronic devices meant to be used in the ears.

**Simulated Cerumen Feature & Notes:**

- ✔ Simulated Ear wax is a sterile solution and can be used directly.
- ✔ Simulated Ear Wax, stored at 4 degrees, transported at room temperature.
- ✔ This product is limited to the scientific research of professionals, and cannot be used for clinical diagnosis or treatment, and cannot be used for food or medicine, and cannot be stored in ordinary houses.
- ✔ For your safety and health, please wear a lab coat and disposable gloves.

**100 gm : \$450.00**

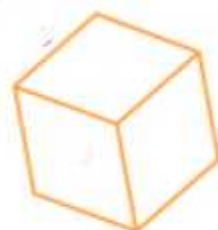
**200 gm : \$750.00**

**50 gm : \$250.00**





# Artificial Bone Marrow



# Artificial Amniotic Fluid





**ARTIFICIAL CHOLESTEROL FLUID**  
(BZ265)

Serum cholesterol is measured to determine the concentration of circulating lipoprotein particles when screening for cardiovascular disease. The concentration is affected by genetic and lifestyle factors. Cholesterol concentrations in serous effusions increase due to exudative processes that cause cell lysis or increased vascular permeability. Measurement of cholesterol in body fluids is used for the diagnosis of a cholesterol effusion or cholesterol-rich pseudochyolous effusion. Pseudochyolous effusions contain low triglycerides and high cholesterol and occur from

**Artificial Cholesterol Fluid Features & Notes:**

- ✔ Simulated Cholesterol Fluid is a sterile solution and can be used directly.
- ✔ Simulated Cholesterol Fluid, stored at 4 degrees, transported at room temperature.
- ✔ This Simulated Cholesterol Fluid is limited to the scientific research of professionals, and cannot be used for clinical diagnosis or treatment, and cannot be used for food or medicine, and cannot be stored in ordinary houses.
- ✔ For your safety and health, please wear a lab coat and disposable gloves.

**100 ml : \$175.00**  
**500 ml : \$525.00**

**200 ml : \$275.00**  
**1000 ml : \$950.00**



**ARTIFICIAL COLONIC FLUID**  
**(STERILE) PH7.8 (BZ177)**

Artificial colonic fluid (sterile) is a solution that simulates the components and pH of the colonic fluid. The artificial colonic fluid is mainly composed of phosphate, etc. This reagent is sterilized by 0.2 µm filtration.

**Artificial colonic fluid Feature & Notes:**

- ✔ Simulated Colonic Fluid is a sterile solution and can be used directly.
- ✔ Simulated Colonic Fluid, stored at 4 degrees, transported at room temperature.
- ✔ This product is limited to the scientific research of professionals, and cannot be used for clinical diagnosis or treatment, and cannot be used for food or medicine, and cannot be stored in ordinary houses.
- ✔ For your safety and health, please wear a lab coat and disposable gloves.

**100 ml : \$95.00**  
**500 ml : \$275.00**

**200 ml : \$135.00**  
**1000 ml : \$550.00**





**ARTIFICIAL COLOSTRUM FLUID**  
(BZ306)

This simulated fluid is only used in the field of scientific research and For in vitro use only.

**Simulated Colostrum Fluid Features & Notes:**

- ✔ Simulated Colostrum Fluid is a sterile solution and can be used directly.
- ✔ Simulated Colostrum Fluid, stored at 4 degrees, transported at room temperature.
- ✔ This Colostrum Fluid is limited to the scientific research of professionals, and cannot be used for clinical diagnosis or treatment, and cannot be used for food or medicine, and cannot be stored in ordinary houses.
- ✔ For your safety and health, please wear a lab coat and disposable gloves.

**100 ml : \$175.00**  
**500 ml : \$525.00**

**200 ml : \$275.00**  
**1000 gm : \$950.00**



**ARTIFICIAL DANDRUFF OR SYNTHETIC DANDRUFF (BZ293)**

Dandruff is a skin condition that mainly affects the scalp. Symptoms include flaking and sometimes mild itchiness. It can result in social or self-esteem problems. A more severe form of the condition, which includes inflammation of the skin, is known as seborrhoeic dermatitis.

**Simulated Dandruff or Artificial Dandruff**

- ✔ Simulated Dandruff Flakes/powder or Artificial Dandruff can be used directly.
- ✔ Simulated Dandruff or Artificial Dandruff, stored at 4 degrees, transported at room temperature.
- ✔ This product is limited to the scientific research of professionals, and cannot be used for clinical diagnosis or treatment, and cannot be used for food or medicine, and cannot be stored in ordinary houses.
- ✔ For your safety and health, please wear a lab coat and disposable gloves.

**10 gm : \$375.00**  
**20 gm : \$700.00**

**100 gm : \$2,750.00**  
**50 gm : \$1,550.00**





**ARTIFICIAL ENDOSOMAL BODY FLUID (BZ260)**

Endosomes are membrane-bound vesicles, formed via a complex family of processes collectively known as endocytosis, and found in the cytoplasm of virtually every animal cell. The basic mechanism of endocytosis is the reverse of what occurs during exocytosis or cellular secretion. It involves the invagination (folding inward) of a cell's plasma membrane to surround macromolecules or other matter diffusing through the extracellular fluid. The encircled foreign materials are then brought into the cell, and following a pinching-off of the membrane (termed budding), are released to the cytoplasm in a

**Artificial Endosomal Fluid Features & Notes:**

- ✔ Simulated Endosomal Fluid is a sterile solution and can be used directly.
- ✔ Simulated Endosomal Fluid, stored at 4 degrees, transported at room temperature.
- ✔ This Endosomal Fluid is limited to the scientific research of professionals, and cannot be used for clinical diagnosis or treatment, and cannot be used for food or medicine, and cannot be stored in ordinary houses.
- ✔ For your safety and health, please wear a lab coat and disposable gloves.

**100 ml : \$175.00**  
**500 ml : \$525.00**

**200 ml : \$275.00**  
**1000 ml : \$950.00**



**ARTIFICIAL FELINE SALIVA OR CAT SALIVA (BZ301)**

This simulated fluid is only used in the field of scientific research and For in vitro use only. Not for Drug and Not for in Vivo Use.

**Artificial Cat Saliva Features & Notes:**

- ✔ Artificial Cat Saliva is a sterile solution and can be used directly.
- ✔ Artificial Cat Saliva, stored at 4 degrees, transported at room temperature.
- ✔ This Artificial Cat Saliva is limited to the scientific research of professionals, and cannot be used for clinical diagnosis or treatment, and cannot be used for food or medicine, and cannot be stored in ordinary houses.
- ✔ For your safety and health, please wear a lab coat and disposable gloves.

**100 ml : \$175.00**  
**500 ml : \$525.00**

**200 ml : \$275.00**  
**1000 ml : \$950.00**





**ARTIFICIAL GASTRIC FLUID**  
STERILE (BZ175)

Artificial gastric fluid (Simulated Gastric Fluid) is a solution that simulates the composition and pH of gastric juice. The reagent is sterilized by 0.2 µm filtration. Artificial gastric juice is mainly composed of sodium chloride, dilute acid, pepsin, etc. After aseptic treatment, it can be used in scientific research experiments such as capsules, enteric-coated tablets, and pills, as well as soft gelatin capsules and dripping pills.

**Artificial gastric fluid Feature & Notes:**

- ✔ Simulated Gastric Fluid is a sterile solution and can be used directly.
- ✔ Simulated Gastric Fluid, stored at 4 degrees, transported at room temperature.
- ✔ This product is limited to the scientific research of professionals, and cannot be used for clinical diagnosis or treatment, and cannot be used for food or medicine, and cannot be stored in ordinary houses.
- ✔ For your safety and health, please wear a lab coat and disposable gloves.

**100 ml : \$95.00**  
**500 ml : \$275.00**

**200 ml : \$135.00**  
**1000 ml : \$550.00**



**ARTIFICIAL INTESTINAL FLUID**  
Sterile(BZ 176)

Artificial intestinal fluid (sterile), also known as synthetic intestinal fluid, is a solution that simulates the components and pH of intestinal fluid. This reagent is sterilized by 0.2µm filtration. The artificial intestinal fluid is mainly composed of phosphate, trypsin, etc. The pH value is 6.8. After aseptic treatment, it can be used in capsules, enteric-coated tablets, pills, especially for enteric-coated capsule And other scientific research experiments.

**Artificial intestinal fluid**

- ✔ Simulated Intestinal Fluid is a sterile solution and can be used directly.
- ✔ Simulated Intestinal Fluid, stored at 4 degrees, transported at room temperature.
- ✔ This product is limited to the scientific research of professionals, and cannot be used for clinical diagnosis or treatment, and cannot be used for food or medicine, and cannot be stored in ordinary houses.
- ✔ For your safety and health, please wear a lab coat and disposable gloves.

**100 ml : \$95.00**  
**500 ml : \$275.00**

**200 ml : \$135.00**  
**1000 ml : \$550.00**





## ARTIFICIAL LUMINAL FLUID (BZ283)

This simulated fluid is only used in the field of scientific research and For in vitro use only.

### Artificial Luminal Fluid Features & Notes:

- ✓ Artificial Luminal Fluid is a sterile solution and can be used directly.
- ✓ Artificial Luminal Fluid, stored at 4 degrees, transported at room temperature.
- ✓ This Artificial Luminal Fluid is limited to the scientific research of professionals, and cannot be used for clinical diagnosis or treatment, and cannot be used for food or medicine, and cannot be stored in ordinary houses.
- ✓ For your safety and health, please wear a lab coat and disposable gloves.

100 ml : \$175.00  
500 ml : \$525.00

200 ml : \$275.00  
1000 ml : \$950.00



## ARTIFICIAL LYMPH FLUID (BZ267)

The lymphatic system is a network of tissues and organs that help rid the body of toxins, waste and other unwanted materials. The primary function of the lymphatic system is to transport lymph, a fluid containing infection-fighting white blood cells, throughout the body.

### Simulated Lymph Fluid Features & Notes:

- ✓ Simulated Lymph fluid is a sterile solution and can be used directly.
- ✓ Simulated Lymph fluid, stored at 4 degrees, transported at room temperature.
- ✓ This Simulated Lymph fluid is limited to the scientific research of professionals, and cannot be used for clinical diagnosis or treatment, and cannot be used for food or medicine, and cannot be stored in ordinary houses.
- ✓ For your safety and health, please wear a lab coat and disposable gloves.

100 ml : \$175.00  
500 ml : \$525.00

200 ml : \$275.00  
1000 ml : \$950.00



# C Artificial Colostrum Fluid



Pack Size: 100 mL, 200 mL,  
500 mL, 1000 mL  
Validity: 6 months

# Artificial Breast Milk



Pack Size: 100 mL, 200 mL,  
500 mL, 1000 mL





**ARTIFICIAL LYSSOMAL FLUID**  
(BZ257)

Lysosomes are acidic compartments filled with more than 60 different types of hydrolases. They mediate the degradation of extracellular particles from endocytosis and of intracellular components from autophagy. The digested products are transported out of the lysosome via specific catabolite exporters or via vesicular membrane trafficking. Lysosomes also contain more than 50 membrane proteins and are equipped with the machinery to sense nutrient availability, which determines the distribution, number, size, and activity of lysosomes to control the specificity of cargo flux and

**Artificial Lysosomal Fluid Features & Notes:**

- ✔ Simulated Lysosomal Fluid is a sterile solution and can be used directly.
- ✔ Simulated Lysosomal Fluid, stored at 4 degrees, transported at room temperature.
- ✔ This Lysosomal Fluid is limited to the scientific research of professionals, and cannot be used for clinical diagnosis or treatment, and cannot be used for food or medicine, and cannot be stored in ordinary houses.
- ✔ For your safety and health, please wear a lab coat and disposable gloves.

**100 ml : \$175.00**  
**500 ml : \$525.00**

**200 ml : \$275.00**  
**1000 ml : \$950.00**



**ARTIFICIAL MENSES FLUID**  
(BZ266)

Menstrual blood is a complex biological fluid composed of blood, vaginal secretions, and the endometrial cells of the uterine wall as they exist immediately prior to menses. These cells are the end product of a dynamic cyclical process focused on pregnancy and reproduction. Consequently, many of the proteins in these cells are expressed in preparation for blastocyst implantation and nurturing. Other proteins in the menstrual blood proteome are a consequence of no implantation and include proteolytic enzymes, cytokines, members of

**Simulated Menses Fluid Features & Notes:**

- ✔ Simulated Menses Fluid is a sterile solution and can be used directly.
- ✔ Simulated Menses Fluid, stored at 4 degrees, transported at room temperature.
- ✔ This Simulated Menses Fluid is limited to the scientific research of professionals, and cannot be used for clinical diagnosis or treatment, and cannot be used for food or medicine, and cannot be stored in ordinary houses.
- ✔ For your safety and health, please wear a lab coat and disposable gloves.

**100 ml : \$175.00**  
**500 ml : \$525.00**

**200 ml : \$275.00**  
**1000 ml : \$950.00**





**ARTIFICIAL MUCUS MATRIX**  
(BZ275)

Mucus is a normal, slippery, and stringy fluid substance produced by many lining tissues in the body. It is essential for body function and acts as a protective and moisturizing layer to keep critical organs from drying out. Mucus also acts as a trap for irritants like dust, smoke, or bacteria. It contains antibodies and bacteria-killing enzymes to help fight off infections.

**Artificial Mucus Matrix Features & Notes:**

- ✔ Artificial Mucus Matrix is a sterile solution and can be used directly.
- ✔ Artificial Mucus Matrix, stored at 4 degrees, transported at room temperature.
- ✔ This Artificial Mucus Matrix is limited to the scientific research of professionals, and cannot be used for clinical diagnosis or treatment, and cannot be used for food or medicine, and cannot be stored in ordinary houses.
- ✔ For your safety and health, please wear a lab coat and disposable gloves.

**100 ml : \$175.00**  
**500 ml : \$525.00**

**200 ml : \$275.00**  
**1000 ml : \$950.00**



**ARTIFICIAL NASAL FLUID**  
(BZ251)

The nasopharynx serves as a passageway for air from the nose to the throat (and eventually to the lungs). Fluid from this region can be collected via swab, aspirate, or wash. Our Simulated Nasal fluid secretions (SNF) used can also be used to detect both bacterial and viral pathogens including diphtheria, meningitis, pertussis, COVID19, and pneumonia, etc.

**Nasal Fluid Features & Notes:**

- ✔ Simulated Nasal Fluid is a sterile solution and can be used directly.
- ✔ Simulated Nasal Fluid, stored at 4 degrees, transported at room temperature.
- ✔ This Nasal Fluid is limited to the scientific research of professionals, and cannot be used for clinical diagnosis or treatment, and cannot be used for food or medicine, and cannot be stored in ordinary houses.
- ✔ For your safety and health, please wear a lab coat and disposable gloves.

**100 ml : \$175.00**  
**500 ml : \$525.00**

**200 ml : \$275.00**  
**1000 ml : \$950.00**





**ARTIFICIAL NASAL MUCUS**  
(BZ253)

The nasopharynx serves as a passageway for air from the nose to the throat (and eventually to the lungs). Fluid from this region can be collected via swab, aspirate, or wash. Our Simulated Nasal fluid secretions (SNF) used can also be used to detect both bacterial and viral pathogens including diphtheria, meningitis, pertussis, COVID19, and pneumonia, etc.

**Nasal Fluid Mucus Features & Notes:**

- ✔ Simulated Nasal Mucus Fluid is a sterile solution and can be used directly.
- ✔ Simulated Nasal Mucus Fluid, stored at 4 degrees, transported at room temperature.
- ✔ This Nasal Mucus Fluid is limited to the scientific research of professionals, and cannot be used for clinical diagnosis or treatment, and cannot be used for food or medicine, and cannot be stored in ordinary houses.
- ✔ For your safety and health, please wear a lab coat and disposable gloves.

**100 ml : \$175.00**  
**500 ml : \$525.00**

**200 ml : \$275.00**  
**1000 ml : \$950.00**



**ARTIFICIAL NASOPHARYNGEAL FLUID**  
(BZ252)

The nasopharynx serves as a passageway for air from the nose to the throat (and eventually to the lungs). Fluid from this region can be collected via swab, aspirate, or wash. Our Simulated Nasopharyngeal secretions (NPS) used can also be used to detect both bacterial and viral pathogens including diphtheria, meningitis, pertussis, COVID19, and pneumonia, etc.

**Nasopharyngeal Fluid Features & Note:**

- ✔ Simulated Nasopharyngeal Fluid is a sterile solution and can be used directly.
- ✔ Simulated Nasopharyngeal Fluid, stored at 4 degrees, transported at room temperature.
- ✔ This Nasopharyngeal Fluid is limited to the scientific research of professionals, and cannot be used for clinical diagnosis or treatment, and cannot be used for food or medicine, and cannot be stored in ordinary houses.
- ✔ For your safety and health, please wear a lab coat and disposable gloves.

**100 ml : \$175.00**  
**500 ml : \$525.00**

**200 ml : \$275.00**  
**1000 ml : \$950.00**





**ARTIFICIAL OTITIS MEDIA FLUID**  
(BZ304)

This simulated fluid is only used in the field of scientific research and For in vitro use only.

**Simulated Otitis Media Fluid Features & Notes:**

- ✔ Simulated Otitis Media Fluid is a sterile solution and can be used directly.
- ✔ Simulated Otitis Media Fluid, stored at 4 degrees, transported at room temperature.
- ✔ This Otitis Media Fluid is limited to the scientific research of professionals, and cannot be used for clinical diagnosis or treatment, and cannot be used for food or medicine, and cannot be stored in ordinary houses.
- ✔ For your safety and health, please wear a lab coat and disposable gloves.

**100 ml : \$175.00**  
**500 ml : \$525.00**

**200 ml : \$275.00**  
**1000 ml : \$950.00**



**ARTIFICIAL PERIPHERAL LYMPH FLUID**  
(BZ303)

The lymphatic system is a network of tissues and organs that help rid the body of toxins, waste, and other unwanted materials. The primary function of the lymphatic system is to transport lymph, a fluid containing infection-fighting white blood cells, throughout the body.

**Simulated Peripheral Lymph Fluid Features & Notes:**

- ✔ Simulated Peripheral Lymph Fluid is a sterile solution and can be used directly.
- ✔ Simulated Peripheral Lymph Fluid, stored at 4 degrees, transported at room temperature.
- ✔ This Peripheral Lymph Fluid is limited to the scientific research of professionals, and cannot be used for clinical diagnosis or treatment, and cannot be used for food or medicine, and cannot be stored in ordinary houses.
- ✔ For your safety and health, please wear a lab coat and disposable gloves.

**100 ml : \$175.00**  
**500 ml : \$525.00**

**200 ml : \$275.00**  
**1000 ml : \$950.00**





**ARTIFICIAL PHLEGM**  
(BZ296)

Phlegm is a type of mucus produced in the lungs and lower respiratory tract. It is most noticeable when a person is acutely sick or has a longstanding health condition. Mucus forms a protective lining in certain parts of the body, even when a person is well.

**Artificial Phlegm Features & Notes:**

- ✔ Artificial Phlegm is a sterile solution and can be used directly.
- ✔ Artificial Phlegm, stored at 4 degrees; transported at room temperature.
- ✔ This Artificial Phlegm is limited to the scientific research of professionals, and cannot be used for clinical diagnosis or treatment, and cannot be used for food or medicine, and cannot be stored in ordinary houses.
- ✔ For your safety and health, please wear a lab coat and disposable gloves.

**100 ml : \$175.00**  
**500 ml : \$525.00**

**200 ml : \$275.00**  
**1000 ml : \$950.00**



**ARTIFICIAL PLASMA FLUID**  
(BZ273)

Blood plasma is a yellowish liquid component of blood that holds the blood cells of whole blood in suspension. It is the liquid part of the blood that carries cells and proteins throughout the body. It makes up about 55% of the body's total blood volume. It is the intravascular fluid part of extracellular fluid (all body fluid outside cells). It is mostly water (up to 95% by volume) and contains important dissolved proteins (6-8%) (e.g., serum albumins, globulins, and fibrinogen), glucose, clotting factors, electrolytes (Na<sup>+</sup>, Ca<sup>2+</sup>, Mg<sup>2+</sup>, HCO<sub>3</sub><sup>-</sup>, Cl<sup>-</sup>, etc.).

**Artificial Plasma Fluid Features & Notes:**

- ✔ Artificial Plasma Fluid is a sterile solution and can be used directly.
- ✔ Artificial Plasma Fluid, stored at 4 degrees; transported at room temperature.
- ✔ This Artificial Plasma Fluid is limited to the scientific research of professionals, and cannot be used for clinical diagnosis or treatment, and cannot be used for food or medicine, and cannot be stored in ordinary houses.
- ✔ For your safety and health, please wear a lab coat and disposable gloves.

**100 ml : \$175.00**  
**500 ml : \$525.00**

**200 ml : \$275.00**  
**1000 ml : \$950.00**



# Simulated Cerumen

Shelf life: one year, refrigerated  
Pack Size: 50 g, 100 g, and 200 g



# Artificial Nasal Fluid

Pack Size: 100 mL, 200 mL, 500 mL, 1000 mL  
Validity: 6 months





**ARTIFICIAL PLEURAL FLUID**  
(BZ258)

Pleural fluid serves a physiologic function in respiration, while also being a useful measure to diagnose and assess disease, trauma, and other abnormalities. A brief review of the anatomy and physiology of normal pleural fluid gives a point of reference for assessing the causes of abnormal pleural fluid collections and pleural effusions.

**Artificial Pleural Fluid Features & Notes:**

- ✔ Simulated Pleural Fluid is a sterile solution and can be used directly.
- ✔ Simulated Pleural Fluid, stored at 4 degrees, transported at room temperature.
- ✔ This Pleural Fluid is limited to the scientific research of professionals, and cannot be used for clinical diagnosis or treatment, and cannot be used for food or medicine, and cannot be stored in ordinary houses.
- ✔ For your safety and health, please wear a lab coat and disposable gloves.

**100 ml : \$175.00**  
**500 ml : \$525.00**

**200 ml : \$275.00**  
**1000 ml : \$950.00**



**ARTIFICIAL RENAL TUBULAR FLUID**  
(BZ269)

The tubular fluid is the fluid in the tubules of the kidney. It starts as a renal ultrafiltrate in the glomerulus, changes composition through the nephron, and ends up as urine leaving through the ureters.

**Artificial Renal Tubular Fluid Features & Notes:**

- ✔ Artificial Renal Tubular Fluid is a sterile solution and can be used directly.
- ✔ Artificial Renal Tubular Fluid, stored at 4 degrees, transported at room temperature.
- ✔ This Artificial Renal Tubular Fluid is limited to the scientific research of professionals, and cannot be used for clinical diagnosis or treatment, and cannot be used for food or medicine, and cannot be stored in ordinary houses.
- ✔ For your safety and health, please wear a lab coat and disposable gloves.

**100 ml : \$175.00**  
**500 ml : \$525.00**

**200 ml : \$275.00**  
**1000 ml : \$950.00**





**ARTIFICIAL RHINORRHEA**  
(BZ295)

Most frequently referred to as Rhinorrhea actually refers to a thin, mostly clear nasal discharge.

**Artificial Pleural Fluid Features & Notes:**

- ✔ Artificial Rhinorrhea is a sterile solution and can be used directly.
- ✔ Artificial Rhinorrhea, stored at 4 degrees, transported at room temperature.
- ✔ This Artificial Rhinorrhea is limited to the scientific research of professionals, and cannot be used for clinical diagnosis or treatment, and cannot be used for food or medicine, and cannot be stored in ordinary houses.
- ✔ For your safety and health, please wear a lab coat and disposable gloves.

**100 ml : \$175.00**  
**500 ml : \$525.00**

**200 ml : \$275.00**  
**1000 ml : \$950.00**



**ARTIFICIAL SERUM ULTRAFILTRATE**  
(BZ307)

This simulated fluid is only used in the field of scientific research and For in vitro use only.

**Simulated Serum Ultrafiltrate Features & Notes:**

- ✔ Simulated Serum Ultrafiltrate is a sterile solution and can be used directly.
- ✔ Simulated Serum Ultrafiltrate is limited to the scientific research of professionals, and cannot be used for clinical diagnosis or treatment, and cannot be used for food or medicine, and cannot be stored in ordinary houses.
- ✔ For your safety and health, please wear a lab coat and disposable gloves.

**100 ml : \$175.00**  
**500 ml : \$525.00**

**200 ml : \$275.00**  
**1000 ml : \$950.00**





**ARTIFICIAL SPUTUM MATRIX**  
(BZ274)

Sputum is produced when a person's lungs are diseased or damaged. Sputum is not saliva but the thick mucus – sometimes called phlegm – which is coughed up from the lungs. The body produces mucus to keep the thin, delicate tissues of the respiratory tract moist so that small particles of foreign matter that may pose a threat can be trapped and forced out.

**Artificial Sputum Matrix Features & Notes:**

- ✔ Artificial Sputum Matrix is a sterile solution and can be used directly.
- ✔ Artificial Sputum Matrix, stored at 4 degrees, transported at room temperature.
- ✔ This Artificial Sputum Matrix is limited to the scientific research of professionals, and cannot be used for clinical diagnosis or treatment, and cannot be used for food or medicine, and cannot be stored in ordinary houses.
- ✔ For your safety and health, please wear a lab coat and disposable gloves.

**100 ml : \$175.00**  
**500 ml : \$525.00**

**200 ml : \$275.00**  
**1000 ml : \$950.00**



**ARTIFICIAL VOMITUS FLUID**  
(BZ282)

This simulated fluid is only used in the field of scientific research and For in vitro use only.

**Artificial Vomitus Fluid Features & Notes:**

- ✔ Artificial Vomitus Fluid is a sterile solution and can be used directly.
- ✔ Artificial Vomitus Fluid, stored at 4 degrees, transported at room temperature.

This Artificial Vomitus Fluid is limited to the scientific research of professionals, and cannot be used for clinical diagnosis or treatment, and cannot be used for food or medicine, and cannot be stored in ordinary houses.

**100 ml : \$175.00**  
**500 ml : \$525.00**

**200 ml : \$275.00**  
**1000 ml : \$950.00**





**ARTIFICIAL WOUND FLUID EXUDATE (BZ292)**

Most frequently referred to as wound "drainage," exudate is a liquid produced by the body in response to tissue damage. It bathes the wound continuously, keeping it moist, supplying nutrients, and providing the best conditions for migration of new tissue to heal the wound.

**Artificial Wound Fluid Exudate Features & Notes:**

- ✔ Artificial Wound Fluid Exudate is a sterile solution and can be used directly.
- ✔ Artificial Wound Fluid Exudate, stored at 4 degrees, transported at room temperature.
- ✔ This Artificial Wound Fluid Exudate is limited to the scientific research of professionals, and cannot be used for clinical diagnosis or treatment, and cannot be used for food or medicine, and cannot be stored in ordinary houses.
- ✔ For your safety and health, please wear a lab coat and disposable gloves.

**100 ml : \$175.00**  
**500 ml : \$525.00**

**200 ml : \$275.00**  
**1000 ml : \$950.00**



**GAMBLE'S SOLUTION LUNG FLUID (BZ284)**

Gamble's solution represents the interstitial fluid deep within the lungs and is a mixture of salts

**Gamble's Solution Lung Fluid Features & Notes:**

- ✔ Gamble's Solution Lung Fluid is a sterile solution and can be used directly.
- ✔ Gamble's Solution Lung Fluid, stored at 4 degrees, transported at room temperature.
- ✔ This Gamble's Solution Lung Fluid is limited to the scientific research of professionals, and cannot be used for clinical diagnosis or treatment, and cannot be used for food or medicine, and cannot be stored in ordinary houses.

**100 ml : \$175.00**  
**500 ml : \$525.00**

**200 ml : \$275.00**  
**1000 ml : \$950.00**





**HANK'S BALANCED SALT SOLUTION (BZ261)**

Hanks' salts is a collective group of salts rich in bicarbonate ions, formulated in 1940 by the microbiologist John H. Hanks. Typically, they are used as a buffer system in cell culture media and aid in maintaining the optimum physiological pH (roughly 7.0-7.4) for cellular growth. Due to their poorly reactive nature and small concentration in solution, Hanks' salts are mainly used in media that are exposed to atmospheric conditions as opposed to CO<sub>2</sub> incubation. Performing the latter drastically exceeds the buffer capacity of Hanks'

**Hank's Balanced Salt Solution Features & Notes:**

- ✔ Hank's Balanced Salt Solution is a sterile solution and can be used directly.
- ✔ Hank's Balanced Salt Solution, stored at 4 degrees, transported at room temperature.
- ✔ This Hank's Balanced Salt Solution is limited to the scientific research of professionals, and cannot be used for clinical diagnosis or treatment, and cannot be used for food or medicine, and cannot be stored in ordinary houses.
- ✔ For your safety and health, please wear a lab coat and disposable gloves.

**100 ml : \$75.00**  
**500 ml : \$250.00**

**200 ml : \$135.00**  
**1000 ml : \$425.00**



**MODIFIED-SIMULATED BODY FLUID (STERILE) (BZ174)**

SBF Simulated Body Fluid is a metastable solution, a supersaturated solution of apatite containing calcium ions and phosphate ions. It is widely used in the evaluation of bioactive materials in vitro and can form bone-like apatite. This reagent is only used in the field of scientific research.

**Simulated Body Fluid Feature & Notes:**

- ✔ SBF is a sterile solution and can be used directly.
- ✔ SBF stored at 4 degrees, transported at room temperature.
- ✔ This product is limited to the scientific research of professionals, and cannot be used for clinical diagnosis or treatment, and cannot be used for food or medicine, and cannot be stored in ordinary houses.
- ✔ For your safety and health, please wear a lab coat and disposable gloves.

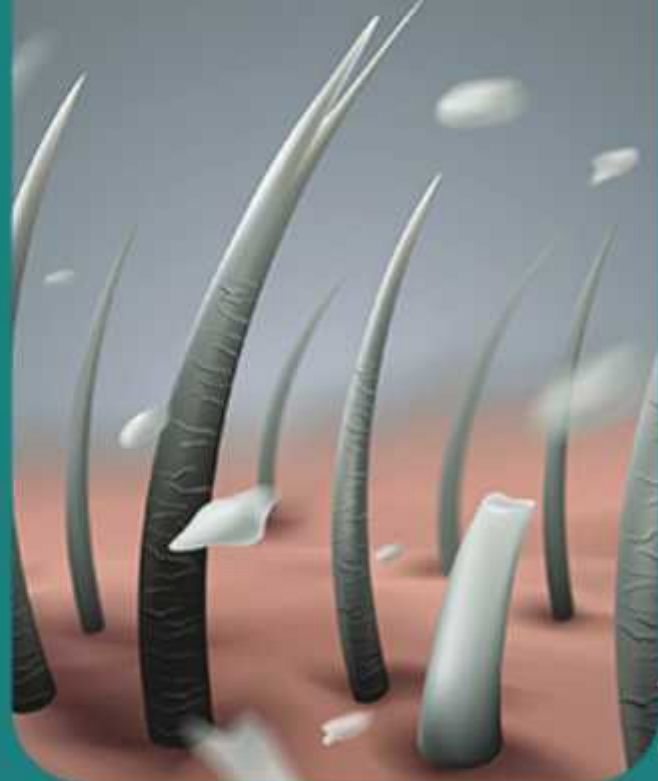
**100 ml : \$95.00**  
**500 ml : \$275.00**

**200 ml : \$135.00**  
**1000 ml : \$550.00**



# Dandruff

Artificial



**Bi**  
CHEMAZONE

**Bi**  
CHEMAZONE

Artificial  
**Plasma  
Fluid**





**PHAGOLYSOSOMAL SIMULANT FLUID (PSF) (BZ262)**

Lysosomes are acidic compartments filled with more than 60 different types of hydrolases. They mediate the degradation of extracellular particles from endocytosis and intracellular components from autophagy. The digested products are transported out of the lysosome via specific catabolite exporters or via vesicular membrane trafficking. Lysosomes also contain more than 50 membrane proteins and are equipped with the machinery to sense nutrient availability, which determines the distribution, number, size, and activity of lysosomes to control the specificity of cargo flux and

**Phagolysosomal Simulant Fluid (PSF) Features & Notes:**

- ✔ Phagolysosomal Simulant Fluid (PSF) is a sterile solution and can be used directly.
- ✔ Phagolysosomal Simulant Fluid, stored at 4 degrees, transported at room temperature.
- ✔ This Phagolysosomal Simulant Fluid is limited to the scientific research of professionals, and cannot be used for clinical diagnosis or treatment, and cannot be used for food or medicine, and cannot be stored in ordinary houses.
- ✔ For your safety and health, please wear a lab coat and disposable gloves.

**100 ml : \$175.00**  
**500 ml : \$525.00**

**200 ml : \$275.00**  
**1000 ml : \$950.00**



**SBF SIMULATED BODY FLUID (STERILE) SIMULATED BODY FLUID (BZ173)**

Simulated Body Fluid (SBF) is a metastable solution, a supersaturated solution of apatite containing calcium ions and phosphate ions. It is widely used in the evaluation of bioactive materials in vitro and can form bone-like apatite. This reagent is only used in the field of scientific research.

**Simulated Body Fluid Feature & Notes:**

- ✔ Simulated Body Fluid is a sterile solution and can be used directly.
- ✔ Simulated Body Fluid, stored at 4 degrees, transported at room temperature.
- ✔ This product is limited to the scientific research of professionals, and cannot be used for clinical diagnosis or treatment, and cannot be used for food or medicine, and cannot be stored in ordinary houses.
- ✔ For your safety and health, please wear a lab coat and disposable gloves.

**100 ml : \$95.00**  
**500 ml : \$275.00**

**200 ml : \$135.00**  
**1000 ml : \$550.00**





**SIMULATED BABY HANDS SWEAT (BZ298)**

Palmar hyperhidrosis is a type of excessive sweating that affects the palms of the hands. It is relatively common in infants and not dangerous.

**Simulated Baby Hands Sweat Features & Notes:**

- ✔ Artificial Baby Hands Sweat is a sterile solution and can be used directly.
- ✔ Artificial Baby Hands Sweat, stored at 4 degrees, transported at room temperature.
- ✔ This Baby Hands Sweat is limited to the scientific research of professionals, and cannot be used for clinical diagnosis or treatment, and cannot be used for food or medicine, and cannot be stored in ordinary houses.
- ✔ For your safety and health, please wear a lab coat and disposable gloves.

**100 ml : \$175.00**  
**500 ml : \$525.00**

**200 ml : \$275.00**  
**1000 ml : \$950.00**



**SIMULATED BILE JUICE (BZ263)**

Bile or gall acts to some extent as a surfactant, helping to emulsify the lipids in food. Bile salt anions are hydrophilic on one side and hydrophobic on the other side; consequently, they tend to aggregate around droplets of lipids (triglycerides and phospholipids) to form micelles, with the hydrophobic sides towards the fat and hydrophilic sides facing outwards. The hydrophilic sides are negatively charged, and this charge prevents fat droplets coated with bile from re-aggregating into larger fat particles. Ordinarily, the micelles in the duodenum

**Simulated Bile Juice Features & Notes:**

- ✔ Simulated Bile Juice is a sterile solution and can be used directly.
- ✔ Simulated Bile Juice Fluid, stored at 4 degrees, transported at room temperature.
- ✔ This Simulated Bile Juice is limited to the scientific research of professionals, and cannot be used for clinical diagnosis or treatment, and cannot be used for food or medicine, and cannot be stored in ordinary houses.
- ✔ For your safety and health, please wear a lab coat and disposable gloves.

**100 ml : \$175.00**  
**500 ml : \$525.00**

**200 ml : \$275.00**  
**1000 ml : \$950.00**





**SIMULATED BLOOD MATRIX (BZ281)**

Blood is considered a connective tissue because it has a matrix. The living cell types are red blood cells, also called erythrocytes, and white blood cells also called leukocytes. The fluid portion of whole blood, its matrix, is commonly called plasma.

**Simulated Blood Matrix Features & Notes:**

- ✔ Simulated Blood Matrix is a sterile solution and can be used directly.
- ✔ Simulated Blood Matrix, stored at 4 degrees, transported at room temperature.
- ✔ This Simulated Blood Matrix is limited to the scientific research of professionals, and cannot be used for clinical diagnosis or treatment, and cannot be used for food or medicine, and cannot be stored in ordinary houses.
- ✔ For your safety and health, please wear a lab coat and disposable gloves.

**100 ml : \$175.00**  
**500 ml : \$525.00**

**200 ml : \$275.00**  
**1000 ml : \$950.00**



**SIMULATED BLOOD SERUM (BZ278)**

Blood serum is the clear liquid that remains after blood clots. Serum in a body is a component of plasma, as blood plasma is composed of a combination of both serum and coagulants. However, when separated from those coagulants through the use of a centrifuge, the serum can be used to conduct a number of medical tests, and it can also be used to develop antiserum - used to help transfer resistance to disease from one body to another.

**Simulated Blood Serum Features & Notes:**

- ✔ Simulated Blood Serum is a sterile solution and can be used directly.
- ✔ Simulated Blood Serum, stored at 4 degrees, transported at room temperature.
- ✔ This Simulated Blood Serum is limited to the scientific research of professionals, and cannot be used for clinical diagnosis or treatment, and cannot be used for food or medicine, and cannot be stored in ordinary houses.
- ✔ For your safety and health, please wear a lab coat and disposable gloves.

**100 ml : \$175.00**  
**500 ml : \$525.00**

**200 ml : \$275.00**  
**1000 ml : \$950.00**





**SIMULATED COCHLEAR FLUID (BZ286)**

The cochlear canals contain two types of fluid: perilymph and endolymph. Perilymph has a similar ionic composition as extracellular fluid found elsewhere in the body and fills the scalae tympani and vestibuli. Endolymph, found inside the cochlear duct (scala media), has a unique composition not found elsewhere in the body.

**Artificial Cochlear Fluid Features & Notes:**

- ✔ Artificial Cochlear Fluid is a sterile solution and can be used directly.
- ✔ Artificial Cochlear Fluid, stored at 4 degrees, transported at room temperature.
- ✔ This Cochlear Fluid is limited to the scientific research of professionals, and cannot be used for clinical diagnosis or treatment, and cannot be used for food or medicine, and cannot be stored in ordinary houses.
- ✔ For your safety and health, please wear a lab coat and disposable gloves.

**100 ml : \$175.00**  
**500 ml : \$525.00**

**200 ml : \$275.00**  
**1000 ml : \$950.00**



**SIMULATED DUODENAL FLUID (BZ299)**

Simulated Stomach Duodenum Fluid used to study the effect of Fluid Volume and Pharmacokinetics. It has inorganic elements, Bicarbonate, Lipase etc.

**Simulated Duodenal Fluid Features & Notes:**

- ✔ Artificial Duodenal Fluid is a sterile solution and can be used directly.
- ✔ Artificial Duodenal Fluid, stored at 4 degrees, transported at room temperature.
- ✔ This Duodenal Fluid is limited to the scientific research of professionals, and cannot be used for clinical diagnosis or treatment, and cannot be used for food or medicine, and cannot be stored in ordinary houses.
- ✔ For your safety and health, please wear a lab coat and disposable gloves.

**100 ml : \$175.00**  
**500 ml : \$525.00**

**200 ml : \$275.00**  
**1000 ml : \$950.00**





**SIMULATED ENDOLYMPH FLUID (BZ287)**

Endolymph is the fluid contained in the membranous labyrinth of the inner ear. The major cation in endolymph is potassium, with the values of sodium and potassium concentration in the endolymph being 0.91 mM and 154 mM, respectively. It is also called Scarpa's fluid, after Antonio Scarpa

**Simulated Endolymph Fluid Features & Notes:**

- ✔ Simulated Endolymph Fluid is a sterile solution and can be used directly.
- ✔ Simulated Endolymph Fluid, stored at 4 degrees, transported at room temperature.
- ✔ This Simulated Endolymph Fluid is limited to the scientific research of professionals, and cannot be used for clinical diagnosis or treatment, and cannot be used for food or medicine, and cannot be stored in ordinary houses.
- ✔ For your safety and health, please wear a lab coat and disposable gloves.

**100 ml : \$175.00**  
**500 ml: \$525.00**

**200 ml : \$275.00**  
**1000 ml : \$950.00**



**SIMULATED EXTRACELLULAR FLUID (BZ280)**

Extracellular fluid is the term for the many fluids that exist in an organism outside of cells of the organism, but sealed within the body cavities and vessels. Extracellular fluid that travels in the circulatory system is blood plasma, the liquid component of blood. As the oxygen and nutrients from blood are transferred out of the blood in the capillaries, these molecules make their way to another extracellular fluid that surrounds individual cells within the body. This is known as interstitial fluid, and surrounds most of the cells in the body.

**Simulated Extracellular Fluid Features & Notes:**

- ✔ Simulated Extracellular Fluid is a sterile solution and can be used directly.
- ✔ Simulated Extracellular Fluid, stored at 4 degrees, transported at room temperature.
- ✔ This Simulated Extracellular Fluid is limited to the scientific research of professionals, and cannot be used for clinical diagnosis or treatment, and cannot be used for food or medicine, and cannot be stored in ordinary houses.
- ✔ For your safety and health, please wear a lab coat and disposable gloves.

**100 ml : \$175.00**  
**500 ml : \$525.00**

**200 ml : \$275.00**  
**1000 ml : \$950.00**





**SIMULATED HEPATIC FLUID (BZ264)**

The liver is located in the upper right-hand portion of the abdominal cavity, beneath the diaphragm, and on top of the stomach, right kidney, and intestines. Shaped like a cone, the liver is a dark reddish-brown organ that weighs about 3 pounds.

**Simulated Hepatic Fluid Features & Notes:**

- ✔ Simulated Hepatic Fluid is a sterile solution and can be used directly.
- ✔ Simulated Hepatic Fluid, stored at 4 degrees, transported at room temperature.
- ✔ This Simulated Hepatic Fluid is limited to the scientific research of professionals, and cannot be used for clinical diagnosis or treatment, and cannot be used for food or medicine, and cannot be stored in ordinary houses.
- ✔ For your safety and health, please wear a lab coat and disposable gloves.

**100 ml : \$175.00**  
**500 ml : \$525.00**

**200 ml : \$275.00**  
**1000 ml : \$950.00**



**SIMULATED INFLAMMATORY FLUID (SIF) (BZ302)**

Simulated Inflammatory Fluid is a special customized inflammation fluid formulation that has been designed to approximate the composition of the Inflammatory Fluid

**Simulated Inflammatory Fluid (SIF) Features & Notes:**

- ✔ Simulated Inflammatory Fluid is a sterile solution and can be used directly.
- ✔ Simulated Inflammatory Fluid, stored at 4 degrees, transported at room temperature.
- ✔ This Simulated Inflammatory Fluid is limited to the scientific research of professionals, and cannot be used for clinical diagnosis or treatment, and cannot be used for food or medicine, and cannot be stored in ordinary houses.
- ✔ For your safety and health, please wear a lab coat and disposable gloves.

**100 ml : \$175.00**  
**500 ml : \$525.00**

**200 ml : \$275.00**  
**1000 ml : \$950.00**





**SIMULATED INTERSTITIAL FLUID (BZ254)**

Interstitial Fluid found in the spaces around cells. It comes from substances that leak out of blood capillaries (the smallest type of blood vessel). It helps bring oxygen and nutrients to cells and to remove waste products from them. As the new interstitial fluid is made, it replaces older fluid, which drains towards lymph vessels. When it enters the lymph vessels, it is called lymph. Also called tissue fluid.

**Interstitial Fluid Features & Notes:**

- ✔ Simulated Interstitial Fluid is a sterile solution and can be used directly.
- ✔ Simulated Interstitial Fluid, stored at 4 degrees, transported at room temperature.
- ✔ This Interstitial Fluid is limited to the scientific research of professionals, and cannot be used for clinical diagnosis or treatment, and cannot be used for food or medicine, and cannot be stored in ordinary houses.
- ✔ For your safety and health, please wear a lab coat and disposable gloves.

**100 ml : \$175.00**  
**500 ml : \$525.00**

**200 ml : \$275.00**  
**1000 ml : \$950.00**



**SIMULATED INTERSTITIAL LUNG FLUID (SILF) (BZ300)**

Simulated Interstitial Lung Fluid (SILF) is a special customized Lung fluid formulation that has been designed to approximate the composition of the Interstitial Lung Fluid.

**Simulated Interstitial Lung Fluid (SILF) Features & Notes:**

- ✔ Simulated Interstitial Lung Fluid (SILF) is a sterile solution and can be used directly.
- ✔ Simulated Interstitial Lung Fluid (SILF), stored at 4 degrees, transported at room temperature.
- ✔ This Simulated Interstitial Lung Fluid (SILF) is limited to the scientific research of professionals, and cannot be used for clinical diagnosis or treatment, and cannot be used for food or medicine, and cannot be stored in ordinary houses.
- ✔ For your safety and health, please wear a lab coat and disposable gloves.

**100 ml : \$175.00**  
**500 ml : \$525.00**

**200 ml : \$275.00**  
**1000 ml : \$950.00**





**SIMULATED INTRAPLEURAL FLUID (BZ290)**

The intrapleural or pleural space is the fluid-filled space in between the parietal and visceral layers of the pleura. In normal conditions, it contains only a small amount of serous pleural fluid.

**Simulated Intrapleural Fluid Features & Notes:**

- ✔ Simulated Intrapleural Fluid is a sterile solution and can be used directly.
- ✔ Simulated Intrapleural Fluid, stored at 4 degrees, transported at room temperature.
- ✔ This Simulated Intrapleural Fluid is limited to the scientific research of professionals, and cannot be used for clinical diagnosis or treatment, and cannot be used for food or medicine, and cannot be stored in ordinary houses.
- ✔ For your safety and health, please wear a lab coat and disposable gloves.

**100 ml : \$175.00  
500 ml : \$525.00**

**200 ml : \$275.00  
1000 ml : \$950.00**



**SIMULATED LUNG FLUID (BZ179)**

Gamble's solution represents the interstitial fluid deep within the lung and is used to simulate different lung conditions. Artificial Lung Fluid is used in pulmonary drug delivery studies as well as in studies of particle inhalation effects. Citrate is used in Gamble's solution instead of proteins to avoid foaming and acetate instead of organic acids. Inquire about other simulated lung fluid formulations.

**Simulated Lung Fluid Feature & Notes:**

- ✔ Simulated Lung Fluid is a sterile solution and can be used directly.
- ✔ Simulated Lung Solution, stored at 4 degrees, transported at room temperature.
- ✔ This product is limited to the scientific research of professionals, and cannot be used for clinical diagnosis or treatment, and cannot be used for food or medicine, and cannot be stored in ordinary houses.
- ✔ For your safety and health, please wear a lab coat and disposable gloves.

**100 ml : \$95.00  
500 ml : \$275.00**

**200 ml : \$135.00  
1000 ml : \$550.00**





**SIMULATED PANCREATIC JUICE (BZ271)**

During digestion, your pancreas makes pancreatic juices called enzymes. These enzymes break down sugars, fats, and starches. Your pancreas also helps your digestive system by making hormones. These are chemical messengers that travel through your blood

**Simulated Pancreatic Juice Features & Notes:**

- ✔ Simulated Pancreatic Juice is a sterile solution and can be used directly.
- ✔ Simulated Pancreatic Juice, stored at 4 degrees, transported at room temperature.
- ✔ This Simulated Pancreatic Juice is limited to the scientific research of professionals, and cannot be used for clinical diagnosis or treatment, and cannot be used for food or medicine, and cannot be stored in ordinary houses.
- ✔ For your safety and health, please wear a lab coat and disposable gloves.

**100 ml : \$175.00**  
**500 ml : \$525.00**

**200 ml : \$275.00**  
**1000 ml : \$950.00**



**SIMULATED PERICARDIAL FLUID (BZ288)**

Pericardial fluid is the serous fluid secreted by the serous layer of the pericardium into the pericardial cavity. The pericardium consists of two layers, an outer fibrous layer, and the inner serous layer.

**Simulated Pericardial Fluid Features & Notes:**

- ✔ Simulated Pericardial Fluid is a sterile solution and can be used directly.
- ✔ Simulated Pericardial Fluid, stored at 4 degrees, transported at room temperature.
- ✔ This Simulated Pericardial Fluid is limited to the scientific research of professionals, and cannot be used for clinical diagnosis or treatment, and cannot be used for food or medicine, and cannot be stored in ordinary houses.
- ✔ For your safety and health, please wear a lab coat and disposable gloves.

**100 ml : \$175.000**  
**500 ml : \$525.00**

**200 ml : \$275.00**  
**1000 ml : \$950.00**





**SIMULATED PERILYMPH FLUID (BZ285)**

Perilymph is an extracellular fluid located within the inner ear. It is found within the scala tympani and scala vestibuli of the cochlea. The ionic composition of perilymph is comparable to that of plasma and cerebrospinal fluid.

**Artificial Perilymph Fluid Features & Notes:**

- ✔ Artificial Perilymph Fluid is a sterile solution and can be used directly.
- ✔ Artificial Perilymph Fluid, stored at 4 degrees, transported at room temperature.
- ✔ This Artificial Perilymph Fluid is limited to the scientific research of professionals, and cannot be used for clinical diagnosis or treatment, and cannot be used for food or medicine, and cannot be stored in ordinary houses.
- ✔ For your safety and health, please wear a lab coat and disposable gloves.

**100 ml : \$175.00**  
**500 ml: \$525.00**

**200 ml : \$275.00**  
**1000 ml : \$950.00**



**SIMULATED PERITONEAL FLUID (BZ289)**

Peritoneal fluid is a liquid made in the abdominal cavity which lubricates the surface of tissue that lines the abdominal wall and pelvic cavity. It covers most of the organs in the abdomen. An increased volume of peritoneal fluid is called ascites

**Simulated Peritoneal Fluid Features & Notes:**

- ✔ Simulated Peritoneal Fluid is a sterile solution and can be used directly.
- ✔ Simulated Peritoneal Fluid, stored at 4 degrees, transported at room temperature.
- ✔ This Simulated Peritoneal Fluid is limited to the scientific research of professionals, and cannot be used for clinical diagnosis or treatment, and cannot be used for food or medicine, and cannot be stored in ordinary houses.
- ✔ For your safety and health, please wear a lab coat and disposable gloves.

**100 ml : \$175.000**  
**500 ml : \$525.00**

**200 ml : \$275.00**  
**1000 ml : \$950.00**





**SIMULATED PROSTATE FLUID (BZ272)**

The prostate secretes fluid that nourishes and protects sperm. During ejaculation, the prostate squeezes this fluid into the urethra, and it's expelled with sperm as semen.

**Simulated Prostate Fluid Features & Notes:**

- ✔ Simulated Prostate Fluid is a sterile solution and can be used directly.
- ✔ Simulated Prostate Fluid, stored at 4 degrees, transported at room temperature.
- ✔ This Simulated Prostate Fluid is limited to the scientific research of professionals, and cannot be used for clinical diagnosis or treatment, and cannot be used for food or medicine, and cannot be stored in ordinary houses.
- ✔ For your safety and health, please wear a lab coat and disposable gloves.

**100 ml : \$175.00**  
**500 ml : \$525.00**

**200 ml : \$275.00**  
**1000 ml : \$950.00**



**SIMULATED RENAL FLUID (BZ270)**

Hydronephrosis is the swelling of one or both kidneys. Kidney swelling happens when urine can't drain from a kidney and builds up in the kidney as a result. This can occur from a blockage in the tubes that drain urine from the kidneys (ureters) or from an anatomical defect that doesn't allow urine to drain properly.

**Simulated Renal Fluid Features & Notes:**

- ✔ Simulated Renal Fluid is a sterile solution and can be used directly.
- ✔ Simulated Renal Fluid, stored at 4 degrees, transported at room temperature.
- ✔ This Simulated Renal Fluid is limited to the scientific research of professionals, and cannot be used for clinical diagnosis or treatment, and cannot be used for food or medicine, and cannot be stored in ordinary houses.
- ✔ For your safety and health, please wear a lab coat and disposable gloves.

**100 ml : \$175.000**  
**500 ml : \$525.00**

**200 ml : \$275.00**  
**1000 ml : \$950.00**





**SIMULATED SEMEN SOLUTION  
OR SEMINAL FLUIDS (BZ180)**

The simulation of mammalian male reproductive secretions or seminal fluids by specific odoriferous chemical compounds comprised of 1-Methyl Pyrrolidine, 1-Methyl-2-Pyrrolidine Methanol, 1-Methyl-2 Pyrrolidine Ethanol, Pyrrolidine, and 2-Pyrrolidone either alone or in various combinations with one another. The simulated seminal fluid's novel odor and appearance is enhanced by the incorporation of various thickeners, suspending agents, solvents, coloring agents, preservatives, and surfactants.

**Simulated Semen Fluid Feature & Notes:**

- ✓ Simulated Seminal Fluid is a sterile solution and can be used directly.
- ✓ Simulated Semen Solution, stored at 4 degrees, transported at room temperature.
- ✓ This product is limited to the scientific research of professionals, and cannot be used for clinical diagnosis or treatment, and cannot be used for food or medicine, and cannot be stored in ordinary houses.
- ✓ For your safety and health, please wear a lab coat and disposable gloves.

**100 ml : \$95.00  
500 ml: \$275.00**

**200 ml : \$135.00  
1000 ml : \$550.00**



**SIMULATED SEROUS  
FLUID (BZ291)**

Serous fluid or serosal fluid is any of various body fluids resembling serum, that are typically pale yellow and transparent and of a benign nature. The fluid fills the inside of body cavities. Serous fluid originates from serous glands, with secretions enriched with proteins and water. Serous fluid may also originate from mixed glands, which contain both mucous and serous cells. A common trait of serous fluids is their role in assisting digestion, excretion, and respiration.

**Simulated Serous Fluid Features & Notes:**

- ✓ Simulated Serous Fluid is a sterile solution and can be used directly.
- ✓ Simulated Serous Fluid, stored at 4 degrees, transported at room temperature.
- ✓ This Simulated Serous Fluid is limited to the scientific research of professionals, and cannot be used for clinical diagnosis or treatment, and cannot be used for food or medicine, and cannot be stored in ordinary houses.
- ✓ For your safety and health, please wear a lab coat and disposable gloves.

**100 ml : \$175.000  
500 ml : \$525.00**

**200 ml : \$275.00  
1000 ml : \$950.00**





**SIMULATED SYNOVIAL FLUID (BZ183)**

Artificial synovial fluid (sterile), also known as synthetic synovial fluid, is a solution that simulates the components and pH of synovial fluid. This reagent is sterilized by 0.2 µm filtration. The synovial fluid was used to evaluate the in vitro bioactive behavior (in vitro bone-bonding ability) of tissue-engineered osteochondral (bone-cartilage) composite used in the treatment of lesions of the articular cartilage.

**Simulated Synovial Fluid Feature & Notes:**

- ✓ Simulated Synovial Solution is a sterile solution and can be used directly.
- ✓ Simulated Synovial Solution, stored at 4 degrees, transported at room temperature.
- ✓ This product is limited to the scientific research of professionals, and cannot be used for clinical diagnosis or treatment, and cannot be used for food or medicine, and cannot be stored in ordinary houses.
- ✓ For your safety and health, please wear a lab coat and disposable gloves.

**100 ml : \$95.00**  
**500 ml : \$275.00**

**200 ml : \$135.00**  
**1000 ml : \$550.00**



**SIMULATED TEARS (BZ182)**

Artificial Tears (sterile), also known as synthetic Tears fluid, is a solution that simulates the components and pH of Tear fluid. This reagent is sterilized by 0.2 µm filtration.

**Simulated Tears Feature & Notes:**

- ✓ Simulated Tear Solution is a sterile solution and can be used directly.
- ✓ Simulated Tear Solution, stored at 4 degrees, transported at room temperature.
- ✓ This product is limited to the scientific research of professionals, and cannot be used for clinical diagnosis or treatment, and cannot be used for food or medicine, and cannot be stored in ordinary houses.
- ✓ For your safety and health, please wear a lab coat and disposable gloves.

**100 ml : \$95.00**  
**500 ml : \$275.00**

**200 ml : \$135.00**  
**1000 ml : \$550.00**





**SIMULATED TRANSCELLULAR FLUID (BZ279)**

The extracellular fluid pertains to all body fluid outside the cell(s). It makes up about 26% of the total body water composition in humans. It is composed of blood plasma, interstitial fluid, lymph, and transcellular fluid. The interstitial fluid and the blood plasma are the major components of the extracellular fluid. The transcellular fluid is the smallest component of the extracellular fluid.

The transcellular fluid is the fluid that fills up the spaces of chambers that are created or formed from the linings of epithelial cells. It is largely made up of water. However,

**Simulated Transcellular Fluid Feature & Notes:**

- ✔ Simulated Transcellular Fluid is a sterile solution and can be used directly.
- ✔ Simulated Transcellular Fluid, stored at 4 degrees, transported at room temperature.
- ✔ This Simulated Transcellular Fluid is limited to the scientific research of professionals, and cannot be used for clinical diagnosis or treatment, and cannot be used for food or medicine, and cannot be stored in ordinary houses.
- ✔ For your safety and health, please wear a lab coat and disposable gloves.

**100 ml : \$175.00**  
**500 ml : \$525.00**

**200 ml : \$275.00**  
**1000 ml : \$950.00**



**SIMULATED VAGINAL FLUID (SVF) (BZ181)**

Simulated Vaginal Fluid that influences interactions of vaginal fluid with topical contraceptive, prophylactic, or therapeutic products. Among these properties, pH and osmolarity play a dominant role in physicochemical processes that govern drug release and distribution.

**Simulated Vaginal Fluid Feature & Notes:**

- ✔ Artificial Vaginal Fluid is a sterile solution and can be used directly.
- ✔ Artificial Vaginal Fluid, stored at 4 degrees, transported at room temperature.
- ✔ This product is limited to the scientific research of professionals, and cannot be used for clinical diagnosis or treatment, and cannot be used for food or medicine, and cannot be stored in ordinary houses.
- ✔ For your safety and health, please wear a lab coat and disposable gloves.

**100 ml : \$95.00**  
**500 ml : \$275.00**

**200 ml : \$135.00**  
**1000 ml : \$550.00**





**SIMULATED VITREOUS HUMOR**  
(BZ277)

The vitreous humor is a transparent, colorless, gelatinous mass that fills the space in the eye between the lens and the retina. It is surrounded by a layer of collagen called the vitreous membrane (or hyaloid membrane or vitreous cortex) separating it from the rest of the eye. It makes up four-fifths of the volume of the eyeball. The vitreous humour is fluid-like near the centre, and gel-like near the edges:

**Simulated Vitreous Humor Fluid Features & Notes:**

- ✔ Simulated Vitreous Humor is a sterile solution and can be used directly.
- ✔ Simulated Vitreous Humor, stored at 4 degrees, transported at room temperature.
- ✔ This Simulated Vitreous Humor is limited to the scientific research of professionals, and cannot be used for clinical diagnosis or treatment, and cannot be used for food or medicine, and cannot be stored in ordinary houses.
- ✔ For your safety and health, please wear a lab coat and disposable gloves.

**100 ml : \$175.00**  
**500 ml : \$525.00**

**200 ml : \$275.00**  
**1000 ml : \$950.00**



**SYNTHETIC FECAL STOOL**  
(BZ308)

This simulated fluid is only used in the field of scientific research and For in vitro use only.

**Synthetic Fecal Stool Features & Notes:**

- ✔ Synthetic Fecal Stool is a sterile solution and can be used directly.
- ✔ Synthetic Fecal Stool is limited to the scientific research of professionals, and cannot be used for clinical diagnosis or treatment, and cannot be used for food or medicine, and cannot be stored in ordinary houses.
- ✔ For your safety and health, please wear a lab coat and disposable gloves.
- ✔ Synthetic Fecal Stool, stored at 4 degrees, transported at room temperature.

**100 ml : \$175.00**  
**500 ml : \$525.00**

**200 ml : \$275.00**  
**1000 ml : \$950.00**





A naturally occurring barrier cream, vernix caseosa, is the viscous material synthesized by the sebaceous glands in the late gestational human fetus. Vernix functions as a moisturizer by increasing the skin hydration and water-holding capacity of treated skin. Vernix films are semi-permeable, i.e., in the range that facilitates barrier repair. Antioxidant, disinfectant, and skin cleansing functions are also present.

#### Synthetic Vernix Caseosa Features & Notes:

- ✓ Artificial Vernix Caseosa is a sterile solution and can be used directly.
- ✓ Artificial Vernix Caseosa, stored at 4 degrees, transported at room temperature.
- ✓ This Vernix Caseosae is limited to the scientific research of professionals, and cannot be used for clinical diagnosis or treatment, and cannot be used for food or medicine, and cannot be stored in ordinary houses.
- ✓ For your safety and health, please wear a lab coat and disposable gloves.

100 gm : \$750.00  
500 gm : \$1,975.00

200 gm : \$1,175.00  
50 gm : \$475.00



# SPECIALTY BUFFERS & FORMULATIONS

Suitability of the buffer for the intended liquid formulation (for Excipients serve different and specialized pharmaceutical purposes in dosage forms.





**0.1MOL/L MES BUFFER**  
(BZ229)

2-(N-morpholine)ethanesulfonic acid is abbreviated as MES, molecular formula is  $C_6H_{13}NO_4S$ , relative molecular weight is 195.24, CAS number is 4432-31-9. MES is often used as a biological buffer, with a pKa of 6.15 at 25°C, an effective buffer range of pH 5.5 to 6.7, and commonly used pH values: 5.5, 6.0, 6.5. Mainly composed of MES, deionized water, preservatives, etc., adjust the pH to 5.5.

**Note It**

- ✔ Operate according to the specific requirements of the experiment.
- ✔ Is irritating to the human body, please pay attention to proper protection.
- ✔ For your safety and health, please wear lab coats and disposable gloves.
- ✔ Storage: Store at 4°C, valid for 6 months.

100 ml : \$95.00  
500 ml : \$275.00

200 ml : \$135.00  
1000 ml : \$550.00



**PBS Phosphate Buffered Saline**  
BZ205

PBS Phosphate Buffered Saline is phosphate-buffered saline, which can provide a relatively stable ionic environment and pH buffering capacity. It is a buffered salt solution often used in biology for molecular cloning and cell culture. The pH is 7.2-7.4. Isotonic with human blood, the main components are potassium dihydrogen phosphate, disodium hydrogen phosphate, sodium chloride and potassium chloride.

**PBS Phosphate Buffered Saline:**

- ✔ Prepare 800 mL of distilled water in a suitable container.
- ✔ Add 8 g of NaCl to the solution.
- ✔ Add 200 mg of KCl to the solution.
- ✔ Add 1.44 g of Na<sub>2</sub>HPO<sub>4</sub> to the solution.

100 ml : \$95.00  
500 ml : \$275.00

200 ml : \$135.00  
1000 ml : \$550.00





**Tris EDTA (TE) Buffer**  
(BZ210)

TE stands for Tris-EDTA buffer, also known as T10E1 buffer. It is a commonly used buffer solution in molecular biology, especially when it involves DNA and RNA to protect it from degradation. TE buffer is composed of two reagents: Tris (the most commonly used pH buffer) and EDTA (divalent metal ion chelating agent). The pH buffer range of the former is 7.5-8.5, and the activity of nuclease is low in this environment; The latter further inactivates the nuclease by chelating metal ions necessary for the nuclease.

**Tris EDTA (TE) Buffer**

- ✔ Prepare 800 mL of distilled water in a suitable container.
- ✔ Add 15.759 g of Tris-Cl (desired pH) to the solution.
- ✔ Add 2.92 g of EDTA (pH 8) to the solution,
- ✔ Add distilled water until volume is 1 L.

**100 ml : \$95.00**  
**500 ml : \$275.00**

**200 ml : \$135.00**  
**1000 ml : \$550.00**



**10xPBS BUFFER (PH7.2-7.4)**  
(BZ220)

PBS (phosphate buffered solution) is phosphate buffer solution, which can provide a relatively stable ionic environment and pH buffering capacity. It is a buffered salt solution often used in biology for molecular cloning and cell culture. The pH is 7.4. The blood is isotonic and the main components are potassium dihydrogen phosphate, disodium hydrogen phosphate, sodium chloride and potassium chloride.

**Precautions:**

- ✔ In the process of using PBS, special care should be taken to avoid contamination of the solution by microorganisms.
- ✔ PBS (10x) is easier to produce precipitation under low temperature conditions.
- ✔ If there is precipitation, please put it in a 37°C water bath until it is completely dissolved before use.
- ✔ For your safety and health, please wear lab coats and disposable gloves.

**100 ml : \$95.00**  
**500 ml : \$275.00**

**200 ml : \$135.00**  
**1000 ml : \$550.00**





**10xTBST BUFFER (PH7.4)**  
(BZ226)

TBST buffer is an isotonic buffer salt solution commonly used in biology. It is mainly used to wash away non-specifically bound antibodies on the membrane in Western Blot experiments. Tris-HCl constitutes a stable pH buffer system, NaCl provides isotonic conditions, and Tween-20 as a detergent can increase the elution capacity of the buffer. This product is a 10x concentrated liquid, which needs to be diluted to 1x working liquid before use. Please tighten the cap in time after use to prevent volatilization. Storage at 4°C can extend the shelf life of the product. Low temperature storage

In molecular biology, TBST (or TTBS) is a mixture of tris-buffered saline (TBS) and Polysorbate 20 (also known as Tween 20). It is a buffer used for washing nitrocellulose membrane in western blotting and microtiter plate wells in ELISA assays.

100 ml : \$95.00  
500 ml : \$275.00

200 ml : \$135.00  
1000 ml : \$550.00



**ACETIC ACID-SODIUM ACETATE BUFFER**  
(BZ225)

Many important reactions in chemistry and biochemistry are pH-dependent, meaning that the pH of the solution can play an important role in determining whether and how rapidly a reaction takes place. Consequently, buffers—solutions that help keep the pH stable—are important for running many experiments. Sodium acetate is a weakly basic salt and the conjugate base of acetic acid, or vinegar. A mixture of sodium acetate and acetic acid makes a good buffer for weakly acidic solutions. A few different ways exist to prepare an acetate buffer, but one method in particular is straightforward and relatively

The buffer solution composed of the weak acid HA and its salt NaA buffers the acid due to the presence of sufficient alkali A<sup>-</sup> in the solution. When a certain amount of strong acid is added to this solution, H<sup>+</sup> ions are basically consumed by A<sup>-</sup> ions:

so the pH value of the solution is almost unchanged; when a certain amount of strong alkali is added, the weak acid HA in the solution consumes OH<sup>-</sup> ions and hinders the change of pH.

100 ml : \$95.00  
500 ml : \$275.00

200 ml : \$135.00  
1000 ml : \$550.00





**BORATE BUFFERED SALINE**  
(BZ224)

Borate buffered saline (abbreviated BBS) is a buffer used in some biochemical techniques to maintain the pH within a relatively narrow range. Borate buffers have an alkaline buffering capacity in the 8-10 range. This buffer with 10 mM Sodium borate.

BBS has many uses because it is isotonic and has a strong bactericidal effect. It can be used to dilute substances and in coating procedures. Additives such as Tween 20 and milk powder can be used to add function as washing buffer or blocking buffer.

100 ml : \$95.00  
500 ml : \$275.00

200 ml : \$135.00  
1000 ml : \$550.00



**CGS BUFFER PH6.5-STERILE**  
(BZ233)

Washing procedures are critical steps in the preparation of platelets for experimental research, since integrity and function of platelets may be affected. This study investigated the initial effects of washing platelets on ADP-mediated platelet responsiveness in comparison with freshly prepared PRP in order to evaluate molecular and functional alterations in washed platelets. As a common medium, CGS buffer was used for the preparation of washed platelets. Subsequent storage of PRP and of washed platelets (suspended in HEPES buffer) was performed under equal conditions at 22°C without agitation.

References: Role of Purinergic Receptor Expression and Function for Reduced Responsiveness to Adenosine Diphosphate In Washed Human Platelets PMID: 268088670

100 ml : \$95.00  
500 ml : \$275.00

200 ml : \$135.00  
1000 ml : \$550.00





**Citric acid sodium citrate buffer**  
(BZ203)

Sodium citrate, also known as sodium citrate, can be used as a chelating agent in industry and as an anticoagulant in the pharmaceutical industry. In biology, sodium citrate is mostly used as a citrate in combination with citric acid. Citric acid sodium citrate buffer can effectively remove the cross-linking between proteins caused by aldehyde fixatives during immunohistochemistry. Expose the epitope in the paraffin section and other samples, thereby greatly improving the immunostaining effect.

Citric acid sodium citrate buffer (0.1mol/L, pH4.5) is obtained by mixing citric acid and sodium citrate in different proportions, with a citrate concentration of 0.1mol/L and pH=4.5.

100 ml : \$95.00  
500 ml : \$275.00

200 ml : \$135.00  
1000 ml : \$550.00



**DULBECCO'S PHOSPHATE BUFFERED SALINE**  
(BZ221)

Dulbecco's Phosphate Buffered Saline, without Calcium-Magnesium is one of the most commonly used phosphate buffered solutions, also known as Dulbecco's phosphate buffered saline, Dulbecco's PBS, D-PBSA, CMF- DPBS, D-PBS, DPBS, mainly composed of sodium chloride, potassium chloride, disodium hydrogen phosphate, potassium dihydrogen phosphate, without Ca<sup>2+</sup>, Mg<sup>2+</sup>, pH 7.4, this reagent is autoclaved and commonly used in cells Washing of cells during culture or other conventional uses. This reagent is a 1x working solution and is used directly.

DPBS is a balanced salt solution (BSS) used for the handling and culturing of mammalian cells. DPBS is used to irrigate, wash, and dilute mammalian cells. Phosphate buffering maintains the pH in the physiological range. Calcium and magnesium facilitate cell binding and clumping. DPBS without these ions can be used to wash and rinse suspended cells.

100 ml : \$95.00  
500 ml : \$275.00

200 ml : \$135.00  
1000 ml : \$550.00





# Acetic Acid-sodium Acetate



# Earle's Balanced Salts Solutions

Common Use  
For Cell Culture





EBSS is the abbreviation of Earle's Balanced Salt Solution, and is in common use for cell culture applications including washing and dilution in CO<sub>2</sub> environments. The addition of the magnesium and calcium ions, along with phenol red, is to assist in reagent preparation. Phenol red is a weak estrogen and should not be used long-term with responsive cell cultures.

Transportation and storage at room temperature, 2-8°C can extend the storage time, valid for 6 months

100 ml : \$95.00  
500 ml : \$275.00

200 ml : \$135.00  
1000 ml : \$550.00

**EARLE'S BALANCED SALTS SOLUTIONS**  
(BZ232)



HEPES is 4-(2-Hydroxyethyl)piperazine-1-ethanesulfonic acid, which is non-toxic to cells. HEPES is a non-ionic amphoteric buffer, which can effectively control the pH in the range of 6.8 to 8.2, especially at pH 7.2 to 7.4. It has good buffering capacity. The final concentration is generally 10 to 50 mmol/L. HEPES can achieve better buffer capacity.

Phygene HEPES buffer (1x, containing calcium and magnesium) is a commonly used solution in cell-cell adhesion experiments. It is mainly composed of HEPES, sodium chloride, potassium chloride, phosphate, glucose, etc., and contains Ca<sup>2+</sup>, Mg<sup>2+</sup>, pH7.4, sterilized by filtration. It is often used to clean tissues or cells (especially embryonic cells) during long-term aggregation culture to protect the cadherin of cells without affecting the formation of cell aggregation.

100 ml : \$95.00  
500 ml : \$275.00

200 ml : \$135.00  
1000 ml : \$550.00

**HEPES BUFFER**  
(BZ228)





**KREBS-RINGER BICARBONATE  
HEPES BUFFER (BZ222)**

The full name is Krebs-Ringer bicarbonate HEPES buffer, which is mainly composed of HEPES , sodium chloride, potassium chloride, sodium bicarbonate, potassium dihydrogen phosphate, calcium chloride, magnesium sulfate, BSA , glucose, etc. Used for animal in vitro experiments , body perfusion and tissue cleaning, And maintain the normal physiological function of the isolated tissue . Only suitable for laboratory research experiments.

Note: Sterile solution mainly prevents microbial contamination.

This reagent is filtered by 0.2um

Storage and transportation: transport in ice bags, storage at 4 ℃ for 3 months!

100 ml : \$95.00  
500 ml : \$275.00

200 ml : \$135.00  
1000 ml : \$550.00



**MODIFIED TYRODE'S SOLUTION  
(BZ235)**

Balanced Salt Solution (BSS) is consistent with the pH value and osmotic pressure in the cell growth state. It has the ability to maintain osmotic pressure, control the acid-base balance, and supply the energy and inorganic salt components necessary for cell survival and metabolism. It can meet the basic needs of cell survival and maintenance of certain metabolism in vitro experiments.

Modified Tyrode's solution is also a kind of balanced salt solution, mainly composed of sodium chloride, phosphate, calcium chloride, glucose, etc., HEPES. The buffer capacity is stronger than that of conventional Tyrode's solution. It is often used in mammalian isolated intestinal muscle experiments and maintains the normal physiological functions of isolated intestinal muscles, body perfusion, and tissue cleaning.

100 ml : \$95.00  
500 ml : \$275.00

200 ml : \$135.00  
1000 ml : \$550.00





**PBS Phosphate Buffered Saline Powder**  
(BZ207)

PBS Phosphate Buffered Saline is phosphate-buffered saline, which can provide a relatively stable ionic environment and pH buffering capacity. It is a buffered salt solution often used in biology for molecular cloning and cell culture. The pH is 7.2-7.4. Isotonic with human blood, the main components are potassium dihydrogen phosphate, disodium hydrogen phosphate, sodium chloride, and potassium chloride.

PBS is an isotonic buffer frequently used in biological applications, such as washing cells, transportation of tissues, and dilutions. PBS closely mimics the pH, osmolarity, and ion concentrations of the human body. Since it is nontoxic to cells, it is extensively used for cell container rinsing and other preparations that might leave a residue. It is simple to prepare and has a good shelf life, but will precipitate in the presence of zinc ions.

100 gm : \$95.00  
500 gm : \$275.00

200 gm : \$135.00  
1000 gm : \$550.00



**PBST (1x,PH7.4)**  
(BZ218)

Phosphate buffered saline, Phosphate-Buffered Saline, is one of the most commonly used phosphate buffered solutions, also known as Dulbecco's phosphate buffered saline, Dulbecco's PBS, D-PBSA, CMF-DPBS, D-PBS, DPBS.

PBST (1x, pH7.4), also known as PBS-Tween, is composed of sodium chloride, disodium hydrogen phosphate, sodium dihydrogen phosphate, etc., contains 0.05% Tween20, does not contain Ca<sup>2+</sup>, Mg<sup>2+</sup>, and has a pH of 7.4. It is mostly used ELISA cleaning solution can also be used to clean PVDF membrane or NC membrane in Western Blot experiment.

This product is 1x working fluid and can be used directly. Storage at 4°C can extend the shelf life of the product. Low temperature storage is not recommended for long-term storage.

100 ml : \$95.00  
500 ml : \$275.00

200 ml : \$135.00  
1000 ml : \$550.00





**PBST (10x, PH7.4)**  
(BZ219)

PBST (phosphate buffered solution) is a phosphate buffer containing Tween-20, which can provide a relatively stable ionic environment and pH buffering capacity. It is a buffered salt solution often used in biology and is mainly used for immunohistochemistry and in situ experiments such as hybridization and enzyme-linked immunoassay, wash the western blot membrane and so on. The product is a colorless liquid with a pH of 7.2-7.4 (25°C). The main ingredients are potassium dihydrogen phosphate, disodium hydrogen phosphate, sodium chloride, potassium chloride and Tween-20.

PBST is commonly used as a wash solution for Western blot membranes and microtiter plate wells in ELISA assays. The Phosphate Buffered Saline with Tween® 20 is an optimal formulation of pH stabilizers, salts and detergents designed to effectively remove excess material from membranes and microtiter plate wells without disrupting the antigen/antibody binding reaction.

By maintaining the proper buffering environment, unbound components can be washed away without suppressing antigen-antibody binding interactions, thereby reducing nonspecific background and increasing the specific signal.

100 ml : \$95.00  
500 ml : \$275.00

200 ml : \$135.00  
1000 ml : \$550.00



**Phosphate Buffer**  
(BZ204)

Phosphate buffer is a phosphate buffer, which can provide a relatively stable ionic environment and pH buffering capacity, and is a buffer salt solution often used in biology.

A simple phosphate buffer is used ubiquitously in biological experiments, as it can be adapted to a variety of pH levels, including isotonic. This wide range is due to phosphoric acid having 3 dissociation constants, (known in chemistry as a triprotic acid) allowing for the formulation of buffers near each of the pH levels of 2.15, 6.86, or 12.32. Phosphate buffer is highly water-soluble and has a high buffering capacity, but will inhibit enzymatic activity and precipitates in ethanol. The buffer is one of the most popular currently used and is commonly employed in molecular and cell biology, chemistry, and material science, among

This product has a concentration of 0.1M and has been sterilized by 0.2µm. Storage at 4°C can extend the shelf life of the product. Low-temperature storage is not recommended for a long time.

100 ml : \$95.00  
500 ml : \$275.00

200 ml : \$135.00  
1000 ml : \$550.00





**RINGER'S SOLUTION**  
(BZ211)

Ringer's solution is also called Riger's Solution, because Ringer's solution contains sodium, potassium, calcium, and chloride in addition to sodium chloride. Because it was invented by the British physiologist "Ringer", it is called Ringer's solution. It is a kind of liquid that is relatively close to the internal environment of amphibians. It can be used to prolong the time of frog heart beating outside the body and maintain the physiological activity of other isolated amphibians tissues and organs.

Ringer's solution is a solution of several salts dissolved in water for the purpose of creating an isotonic solution relative to the body fluids of an animal. Ringer's solution typically contains sodium chloride, potassium chloride, calcium chloride and sodium bicarbonate, with the last used to balance the pH. Other additions can include chemical fuel sources for cells, including ATP and dextrose, as well as antibiotics and antifungals.

Ringer's solution is frequently used in in vitro experiments on organs or tissues, such as in vitro muscle testing. The precise mix of ions can vary depending upon the taxon, with different recipes for birds, mammals, freshwater fish, marine fish, etc.

100 ml : \$95.00  
500 ml : \$275.00

200 ml : \$135.00  
1000 ml : \$550.00



**SALINE SODIUM CITRATE BUFFER**  
(BZ231)

SSC (saline sodium citrate) buffer solution is the most standard blotting and hybridization treatment solution in molecular biology. It is designed to be used in various hybridization experiments to achieve denaturation and cleaning purposes. The main components are sodium chloride and sodium citrate. The sodium citrate in the SSC buffer acts as a buffer. The salt ion (Na) neutralizes the negative charge on the nucleic acid backbone and makes it neutral. This makes the probe and target sequence easier to bind. It is also used in the preparation of SDS-PAGE electrophoresis separation gel. For nucleic acid hybridization,

In biochemistry and molecular biology, the saline-sodium citrate buffer is used as a hybridization buffer, to control stringency for washing steps in protocols for Southern blotting, in situ hybridization, DNA Microarray or Northern blotting. 20X SSC may be used to prevent drying of agarose gels during a vacuum transfer.

100 ml : \$95.00  
500 ml : \$275.00

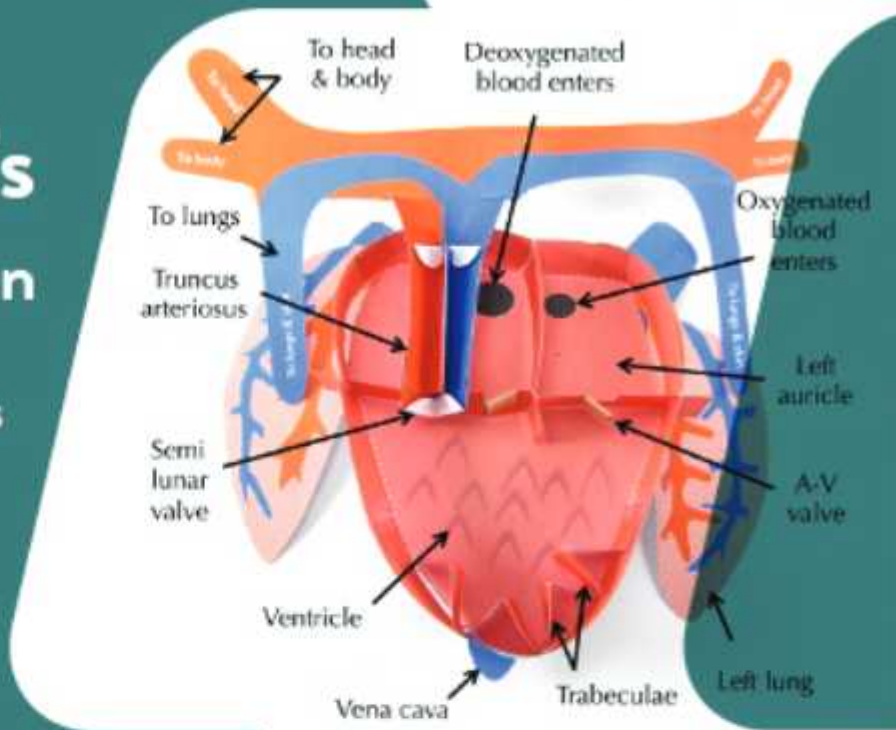
200 ml : \$135.00  
1000 ml : \$550.00



# Ringer's solution

This product is sterilized by 0.2µm filter!

Validity: 12 months



Sodium Citrate  
**Buffer Powder**



0.01mol/L, pH6.0

Product specifications 1L | 2L





**SODIUM CITRATE BUFFER POWDER**  
(BZ213)

Product name Sodium Citrate Buffer with Powder (0.01mol/L, pH6.0) / Sodium Citrate Buffer with Powder (0.01mol/L, pH6.0)  
Product specifications 1L | 2L

Product introduction After cells or tissues are fixed with paraformaldehyde, formaldehyde or other aldehyde reagents, the intracellular antigens will form aldehyde bonds and carboxymethyl bonds, which will block part of the antigenic determinants, and at the same time cross-link between the proteins to make the antigen The determinants are concealed, leading to weakening of the staining signal during immunostaining, and even some false negative staining results. Therefore, it is required that when performing immunohistochemical staining, it is necessary to perform antigen retrieval or exposure first, that is, to destroy the crosslinks formed between molecules during fixation, and restore the original spatial shape of the antigen. Thereby increasing the detection rate of antigen, reducing background staining, and improving the accuracy of detection. Sodium citrate buffer 0.01mol/L, pH 6.0 is a commonly used antigen retrieval solution, which can be used for antigen retrieval after paraffin section, frozen section and other samples are fixed with paraformaldehyde, formaldehyde or other aldehyde reagents. It can effectively remove the crosslinks between proteins caused by aldehyde fixation reagents, and fully expose the epitopes in samples such as

100 ml : \$95.00  
500 ml : \$275.00

200 ml : \$135.00  
1000 ml : \$550.00



**TBS BUFFER (0.05MOL/L, PH7.4)**  
(BZ223)

TBS buffer is an isotonic buffer salt solution commonly used in biology. It is mainly used in immunohistochemistry, in situ hybridization, enzyme-linked immunosorbent assays, and other experiments to wash non-specifically bound antibodies in western blot experiments. Tris-HCl constitutes a stable pH buffer system, and NaCl provides isotonic conditions.

Tris-buffered saline (abbreviated TBS) is a buffer used in some biochemical techniques to maintain the pH within a relatively narrow range. Tris (with HCl) has a slightly alkaline buffering capacity in the 7-9.2 range.

TBS has many uses because it is isotonic and non-toxic. It can be used to dilute substances used in laboratory experiments. Additives can be used to add to a compound's functionality.

100 ml : \$95.00  
500 ml : \$275.00

200 ml : \$135.00  
1000 ml : \$550.00





**Tris Acetic Acid (TAE buffer)**  
(BZ208)

TAE is the most widely used nucleic acid electrophoresis buffer in biology, mainly used for agarose gel electrophoresis of DNA. The main components of TAE are Tris-acetate and EDTA. The mobility of double-stranded linear DNA during electrophoresis is faster, and the separation effect of fragments larger than 13kb is good when electrophoresis. In addition, the TAE buffer system is also suitable for electrophoresis when recovering DNA fragments.

TBE is characterized by strong buffering capacity. TBE can be used for long-term electrophoresis, and the separation effect is better when used for electrophoresis of fragments less than 1kb. TBE is easy to cause high electro-osmosis when used in agarose gel, and the recovery rate of DNA fragments is reduced due to the interaction with agarose to generate non-covalently bound tetrahydroxyborate complexes, so it is not suitable for recovery electrophoresis use.

100 ml : \$95.00  
500 ml : \$275.00

200 ml : \$135.00  
1000 ml : \$550.00



**Tris boric acid buffer**  
(BZ202)

Tris buffers are used under slightly basic pH conditions, as for DNA electrophoresis, because this keeps the DNA soluble in the solution and deprotonated so it will be attracted to the positive electrode and will migrate through a gel. EDTA is an ingredient in the solution because this common chelating agent protects nucleic acids from degradation by enzymes. The EDTA chelates divalent cations that are cofactors for nucleases that may contaminate the sample. However, since the magnesium cation is a cofactor for DNA polymerase and restriction enzymes, the concentration of EDTA is kept purposely low (around 1 mM).

Although TBE and TAE are common electrophoresis buffers, there are other options for low-molarity conductive solutions, including lithium borate buffer and sodium borate buffer. The problem with TBE and TAE are that Tris-based buffers limit the electric field that can be used in electrophoresis because too much charge causes a runaway temperature.

100 ml : \$95.00  
500 ml : \$275.00

200 ml : \$135.00  
1000 ml : \$550.00





**TRIS-BORIC ACID ELECTROPHORESIS BUFFER (BZ209)**

TBE buffer is a nucleic acid electrophoresis buffer salt solution commonly used in biology, mainly used for agarose gel electrophoresis of DNA. The main components of TBE are Tris-borate and EDTA, with strong buffering capacity, suitable for longer electrophoresis, higher resolution, and good separation effect when electrophoresing fragments less than 1kb.

The boric acid component in TBE buffer will affect the efficiency of DNA recovery and subsequent enzymatic reactions. To perform agarose gel electrophoresis recovery experiments of DNA fragments, it is recommended to use TAE buffer.

Tris buffers are used under slightly basic pH conditions, as for DNA electrophoresis, because this keeps the DNA soluble in the solution and deprotonated so it will be attracted to the positive electrode and will migrate through a gel. EDTA is an ingredient in the solution because this common chelating agent protects nucleic acids from degradation by enzymes. The EDTA chelates divalent cations that are cofactors for nucleases that may contaminate the sample. However, since the magnesium cation is a cofactor for DNA polymerase and restriction enzymes, the concentration of EDTA is kept purposely low (around 1 mM concentration).

100 ml : \$95.00  
500 ml : \$275.00

200 ml : \$135.00  
1000 ml : \$550.00



**TRIS-EDTA BUFFER PH7.4 (BZ230)**

TE stands for Tris-EDTA buffer, also known as T10E1 buffer. It is a commonly used buffer solution in molecular biology, especially when it involves DNA and RNA to protect it from degradation. TE buffer is composed of two reagents: Tris (the most commonly used pH buffer) and EDTA (divalent metal ion chelating agent). The pH buffer range of the former is 7.5-8.5. Under this environment, nuclease activity is low; The latter further inactivates the nuclease by chelating metal ions necessary for the nuclease.

TE buffer is a commonly used buffer solution in molecular biology, especially in procedures involving DNA, cDNA or RNA. "TE" is derived from its components: Tris, a common pH buffer, and EDTA, a molecule that chelates cations like Mg<sup>2+</sup>. The purpose of TE buffer is to solubilize DNA or RNA, while protecting it from degradation.

100 ml : \$95.00  
500 ml : \$275.00

200 ml : \$135.00  
1000 ml : \$550.00





**TRIS-HCL BUFFER**  
(BZ201)

Tris, or tris(hydroxymethyl)aminomethane, or known during medical use as tromethamine or THAM, is an organic compound with the formula  $(\text{HOCH}_2)_3\text{CNH}_2$ . It is extensively used in biochemistry and molecular biology as a component of buffer solutions such as in TAE and TBE buffers, especially for solutions of nucleic acids.

"Tris" is a chemical compound used as a buffer. The full name is tris(hydroxymethyl)aminomethane. Tris has the ability to absorb counter ions (+H and -OH) so as to help keep the solution that they are in at a stable pH level. When the pH of Tris is set using HCl (hydrochloric acid) the buffer is called Tris HCl.

100 ml : \$95.00  
500 ml : \$275.00

200 ml : \$135.00  
1000 ml : \$550.00



**TRIS-HCL BUFFER (10MM MOL/L)**  
(BZ234)

Tris, or tris(hydroxymethyl)aminomethane, or known during medical use as tromethamine or THAM, is an organic compound with the formula  $(\text{HOCH}_2)_3\text{CNH}_2$ . It is extensively used in biochemistry and molecular biology as a component of buffer solutions such as in TAE and TBE buffers, especially for solutions of nucleic acids.

"Tris" is a chemical compound used as a buffer. The full name is tris(hydroxymethyl)aminomethane. Tris has the ability to absorb counter ions (+H and -OH) so as to help keep the solution that they are in at a stable pH level. When the pH of Tris is set using HCl (hydrochloric acid) the buffer is called Tris HCl.

100 ml : \$95.00  
500 ml : \$275.00

200 ml : \$135.00  
1000 ml : \$550.00





**TRIS-HCL BUFFER (1MOL/L, PH6.8)**  
(BZ206)

Used to prepare SDS-PAGE or native PAGE super gel, imported reagent preparation.

Tris is also called Tris base or 2-Amino-2-(hydroxymethyl)-1,3-propanediol. The molecular formula is  $C_4H_{11}NO_3$ , the molecular weight is 121.14, and the purity is >99.9%.

Tris, or tris(hydroxymethyl)aminomethane, or known during medical use as tromethamine or THAM, is an organic compound with the formula  $(HOCH_2)_3CNH_2$ . It is extensively used in biochemistry and molecular biology as a component of buffer solutions such as in TAE and TBE buffers, especially for solutions of nucleic acids.

"Tris" is a chemical compound used as a buffer. The full name is tris(hydroxymethyl)aminomethane. Tris has the ability to absorb counter ions (+H and -OH) so as to help keep the solution that they are in at a stable pH level. When the pH of Tris is set using HCl (hydrochloric acid) the buffer is called Tris HCl.

100 ml : \$95.00  
500 ml : \$275.00

200 ml : \$135.00  
1000 ml : \$550.00



**TRIS-HCL BUFFER (1MOL/L, PH7.4)**  
(BZ217)

Commonly used buffers and imported reagents are prepared. It can be used in various routine biochemical and molecular biology experiments.

Tris is also called Tris base or 2-Amino-2-(hydroxymethyl)-1,3-propanediol. The molecular formula is  $C_4H_{11}NO_3$ , the molecular weight is 121.14, and the purity is >99.9%.

Tris, or tris(hydroxymethyl)aminomethane, or known during medical use as tromethamine or THAM, is an organic compound with the formula  $(HOCH_2)_3CNH_2$ . It is extensively used in biochemistry and molecular biology as a component of buffer solutions such as in TAE and TBE buffers, especially for solutions of nucleic acids.

"Tris" is a chemical compound used as a buffer. The full name is tris(hydroxymethyl)aminomethane. Tris has the ability to absorb counter ions (+H and -OH) so as to help keep the solution that they are in at a stable pH level. When the pH of Tris is set using HCl (hydrochloric acid) the buffer is called Tris HCl.

100 ml : \$95.00  
500 ml : \$275.00

200 ml : \$135.00  
1000 ml : \$550.00





**TRIS-HCL BUFFER (1MOL/L, PH8.0, STERILE)**  
(BZ214)

Tris (Tris(hydroxymethyl)aminomethane) is a weak base with a molecular formula of  $C_4H_{11}NO_3$ , a relative molecular weight of 121.14, and a  $pK_a$  of 8.1 at  $25^\circ C$ . The effective buffer range of Tris buffer is between pH 7.0 and 9.2. The pH of the aqueous solution of Tris base is around 10.5. Generally, hydrochloric acid is added to adjust the pH to the desired value to obtain a buffer of this pH. It is often used as a biological buffer, and its pH value is 6.8, 7.4, 8.0, 8.8, and its pH value varies greatly with temperature. Generally speaking, every time the temperature increases by 1 $^\circ C$ , the pH value

Tris, or tris(hydroxymethyl)aminomethane, or known during medical use as tromethamine or THAM, is an organic compound with the formula  $(HOCH_2)_3CNH_2$ . It is extensively used in biochemistry and molecular biology as a component of buffer solutions such as in TAE and TBE buffers, especially for solutions of nucleic acids.

"Tris" is a chemical compound used as a buffer. The full name is tris(hydroxymethyl)aminomethane. Tris has the ability to absorb counter ions (+H and -OH) so as to help keep the solution that they are in at a stable pH level. When the pH of Tris is set using HCl (hydrochloric acid) the buffer is called Tris HCl.

100 ml : \$95.00  
500 ml : \$275.00

200 ml : \$135.00  
1000 ml : \$550.00



**TRIS-HCL BUFFER (1MOL/L, PH8.5, RNASE FREE)**  
(BZ215)

Tris (Tris(hydroxymethyl)aminomethane) is a weak base with a molecular formula of  $C_4H_{11}NO_3$ , a relative molecular weight of 121.14, and a  $pK_a$  of 8.1 at  $25^\circ C$ . The effective buffer range of Tris buffer is between pH 7.0 and 9.2. The pH of the aqueous solution of Tris base is around 10.5. Generally, hydrochloric acid is added to adjust the pH to the desired value to obtain a buffer of this pH. It is often used as a biological buffer, and its pH value is 6.8, 7.4, 8.0, 8.8, and its pH value varies greatly with temperature. Generally speaking, for every  $1^\circ C$  increase in temperature, the pH drops by 0.03.

Tris, or tris(hydroxymethyl)aminomethane, or known during medical use as tromethamine or THAM, is an organic compound with the formula  $(HOCH_2)_3CNH_2$ . It is extensively used in biochemistry and molecular biology as a component of buffer solutions such as in TAE and TBE buffers, especially for solutions of nucleic acids.

"Tris" is a chemical compound used as a buffer. The full name is tris(hydroxymethyl)aminomethane. Tris has the ability to absorb counter ions (+H and -OH) so as to help keep the solution that they are in at a stable pH level. When the pH of Tris is set using HCl (hydrochloric acid) the buffer is called Tris HCl.

100 ml : \$95.00  
500 ml : \$275.00

200 ml : \$135.00  
1000 ml : \$550.00





**TRIS-HCL BUFFER (1MOL/L, PH8.8)**  
(BZ216)

Used to prepare the lower layer glue of SDS-PAGE or native PAGE, prepared with imported reagents.

Tris is also called Tris base or 2-Amino-2-(hydroxymethyl)-1,3-propanediol. The molecular formula is  $C_4H_{11}NO_3$ , the molecular weight is 121.14, and the purity is >99.9%.

Tris, or tris(hydroxymethyl)aminomethane, or known during medical use as tromethamine or THAM, is an organic compound with the formula  $(HOCH_2)_3CNH_2$ . It is extensively used in biochemistry and molecular biology as a component of buffer solutions such as in TAE and TBE buffers, especially for solutions of nucleic acids.

\*Tris\* is a chemical compound used as a buffer. The full name is tris(hydroxymethyl)aminomethane. Tris has the ability to absorb counter ions (+H and -OH) so as to help keep the solution that they are in at a stable pH level. When the pH of Tris is set using HCl (hydrochloric acid) the buffer is called Tris HCl.

100 ml : \$95.00  
500 ml : \$275.00

200 ml : \$135.00  
1000 ml : \$550.00



**TYRODE'S SOLUTION**  
(BZ212)

Balanced Salt Solution (BSS) is consistent with the pH value, osmotic pressure and other environmental conditions in the cell growth state, and has the functions of maintaining osmotic pressure, controlling acid-base balance, and supplying energy and inorganic salt components necessary for cell survival and metabolism. It can meet the basic needs of cell survival and maintenance of certain metabolism in in vitro experiments.

Tyrode's Solution is a kind of balanced salt solution, mainly composed of sodium chloride, phosphate, calcium chloride, glucose, etc. It is often used for breastfeeding body perfusion, cleansing tissues, and maintaining the normal physiological functions of isolated intestinal muscles.

Tyrode's solution is a solution that is roughly isotonic with interstitial fluid and used in physiological experiments and tissue culture. It resembles lactated Ringer's solution, but contains magnesium, a sugar (usually glucose) as an energy source and uses bicarbonate and phosphate as a buffer instead of lactate.

100 ml : \$95.00  
500 ml : \$275.00

200 ml : \$135.00  
1000 ml : \$550.00





## MORE INFORMATION FOR YOU



[www.biochemazone.com](http://www.biochemazone.com)



5408 36 St NW, Edmonton,  
Alberta T6B 3P3, Canada



+1-3658887013



[info@biochemazone.com](mailto:info@biochemazone.com)